

DATE REVISED	DATE FILMED	DATE REVISED	DATE FILMED	FED. ROAD DIST. NO.	STATE	FED. AID PROJ. NO.	SHEET NO.	TOTAL SHEETS
				6	ARK.	5611A&B, 5612A&B	13	211
				JOB NO.	5611A&B, 5612A&B QUANT. 19029			

SCHEDULE OF BRIDGE QUANTITIES

BRIDGE NO.	CODE NO.	NAME PLATE TITLE	UNIT OF STRUCTURE	ITEM NO	801	SP# 802	SP# 802	803	804	* SP# 803	806	SP# 807	SP# 807	SP# 807	SP# 807	809	812	916
				ITEM	UNCLASSIFIED EXCAVATION FOR STRUCTURES - BRIDGE	CLASS 5 CONCRETE	CLASS 5(AE) CONCRETE	BOILED LINSEED OIL	REINFORCING STEEL (GRADE 60)	PRECAST CONCRETE PILING (16" OCT)	METAL BRIDGE RAILING (TYPE A)	STRUCTURAL STEEL IN BEAM SPANS (A36)	STRUCTURAL STEEL IN BEAM SPANS (A572-50)	STRUCTURAL STEEL IN PLATE GIRDER SPANS (A36)	STRUCTURAL STEEL IN PLATE GIRDER SPANS (A572-50)	PREFORMED JOINT SEALER	BRIDGE NAME PLATE (TYPE C)	CONCRETE RIPRAP
5611A	1271	HIGHWAY 104	END BENT NO. 1	CU YD	116	35.63		0.2	3059	280				3407				130
			INT. BENT NO. 2		19	51.81			7341	530								
			INT. BENT NO. 3		82	51.74			7341	525								
			END BENT NO. 4		116	33.52			3059	280				3407				
			242'-0" CONT. PL GIRDER UNIT				275.60	23.3	66230		484		181456	30810		1	112	
			TOTAL FOR BR NO. 5611A		393	170.70	275.60	23.7	87030	1615	484		188270	30810		1	242	
5611B	1271	HIGHWAY 104	END BENT NO. 1		116	33.32		0.2	3059	280				3407			1	112
			INT. BENT NO. 2		81	50.49			7182	525								
			INT. BENT NO. 3		73	49.61			6823	525								
			END BENT NO. 4		116	33.58			3059	285				3407				
			242'-0" CONT. PL GIRDER UNIT				275.60	23.3	66237		484		181456	30810			115	
			TOTAL FOR BR NO. 5611B		386	167.00	275.60	23.7	86260	1615	484		188270	30810		1	227	
5612A	1271	JEFFERSON ROAD	END BENT NO. 1		45	26.90		0.2	2424	175		763						17
			INT. BENT NO. 2		108	36.14			4453	300								
			INT. BENT NO. 3		107	36.14			5350	305								
			END BENT NO. 4		36	25.52			2326	175		763						
			144'-0" CONT. PL GIRDER UNIT				164.20	14.4	39357		288	19184	76910		90.0	1	84	
			TOTAL FOR BR NO. 5612A		296	124.70	164.20	14.8	53910	955	288	19710	76910		90.0	1	161	
5612B	1271	JEFFERSON ROAD	END BENT NO. 1		36	25.52		0.2	2326	175		763						84
			INT. BENT NO. 2		87	35.04			4712	305								
			INT. BENT NO. 3		86	35.05			4296	300								
			END BENT NO. 4		45	26.07			2424	175		763						
			144'-0" CONT. PL GIRDER UNIT				164.20	14.4	39362		288	18184	76910		90.0		74	
			TOTAL FOR BR NO. 5612B		250	122.50	164.20	14.8	53120	955	288	19710	76910		90.0	1	158	
TOTAL FOR JOB NO. 2783					1,331	584.90	879.60	77.0	280,320	5,140	1,524	39,420	153,820	376,540	61,620	180.0	4	788

* Refers to SP 802-5

SCHEDULE OF BRIDGE QUANTITIES
HIGHWAY 104--JEFFERSON ROAD
JEFFERSON COUNTY
ROUTE 65 SEC. 14
ARKANSAS STATE HIGHWAY COMMISSION

LITTLE ROCK, ARK.
DRAWN BY: J.P.S. DATE: 10-11-74
DESIGNED BY: D.V. DATE: 10-22-74
CHECKED BY: DATE: 10-22-74
SCALE: No Scale
BRIDGE NO. 5611A&B, 5612A&B
DRAWING NO. 19029

Paul P. Baker
BRIDGE ENGINEER

DATE REVISED	DATE REVISED	DATE REVISED	DATE REVISED	FED. ROAD NO.	STATE	FED. AID PROJ. NO.	SHEET NO.	TOTAL SHEETS
				6	ARK.	EAC 67025-2(97)	5C	211
						JOB NO.	2783	
						STATION	LAYOUT	19039

GENERAL NOTES

BENCH MARK - COTTON PICKER SPIKE IN STUMP 24' PINE 179' RT. STA. 769+86, ELEV. 310.48.

ALL PILING SHALL BE 16" PRECAST CONCRETE AND SHALL BE DRIVEN WITH AN APPROVED AIR, STEAM, OR DIESEL HAMMER TO A MINIMUM CAPACITY OF 44 TONS PER PILE AND TO A MINIMUM PENETRATION OF 20' BELOW THE GROUND LINE, AND AT LEAST 12' BELOW NATURAL GROUND. LENGTH OF PILING SHOWN ARE ASSUMED FOR ESTIMATING QUANTITIES ONLY. ACTUAL LENGTH ARE TO BE DETERMINED IN THE FIELD. DRIVE ONE 30" TEST PILE IN BENT NO. 2 OF BRIDGE "B" AND ONE 30" TEST PILE IN BENT NO. 2 OF BRIDGE "A". PILES FOR END BENTS SHALL BE DRIVEN AFTER EMBANKMENT TO SUBGRADE IS IN PLACE.

ALL CONCRETE IN THE SUPERSTRUCTURE SHALL BE CLASS 5(A). ALL CONCRETE IN THE SUBSTRUCTURE SHALL BE CLASS "S" AND SHALL BE POURED IN THE DRY. ALL EXPOSED CORNERS SHALL BE CHAMFERED 3/4" UNLESS OTHERWISE NOTED.

FOR DETAILS OF END BENTS, SEE DWG. NO. 19041 AND 19042
FOR DETAILS OF INT. BENTS, SEE DWG. NO. 19043 AND 19044
FOR DETAILS OF SUPERSTRUCTURE, SEE DWG. NO. 19045 THRU 19047
FOR DETAILS OF PRECAST CONCRETE PILING, SEE DWG. NO. 2282
FOR DETAILS OF CONCRETE FILLED METAL SHELL PILING, SEE DWG. NO. 2361A
FOR DETAILS OF CONCRETE RIPRAP, SEE DWG. NO. 14995A

SPECIFICATIONS: ARKANSAS STATE HIGHWAY COMMISSION STANDARD SPECIFICATIONS FOR HIGHWAY CONSTRUCTION, EDITION OF 1972, AND APPLICABLE SPECIAL PROVISIONS.

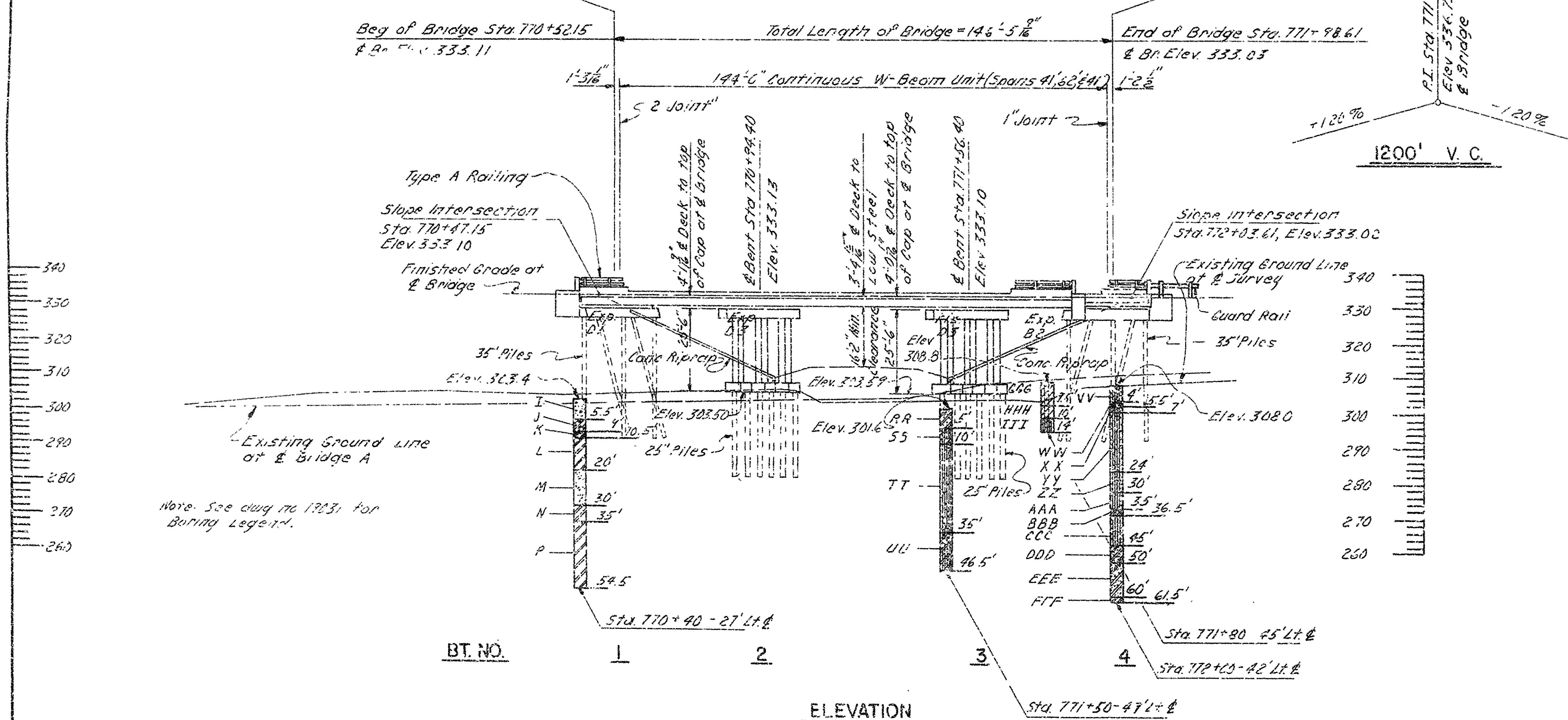
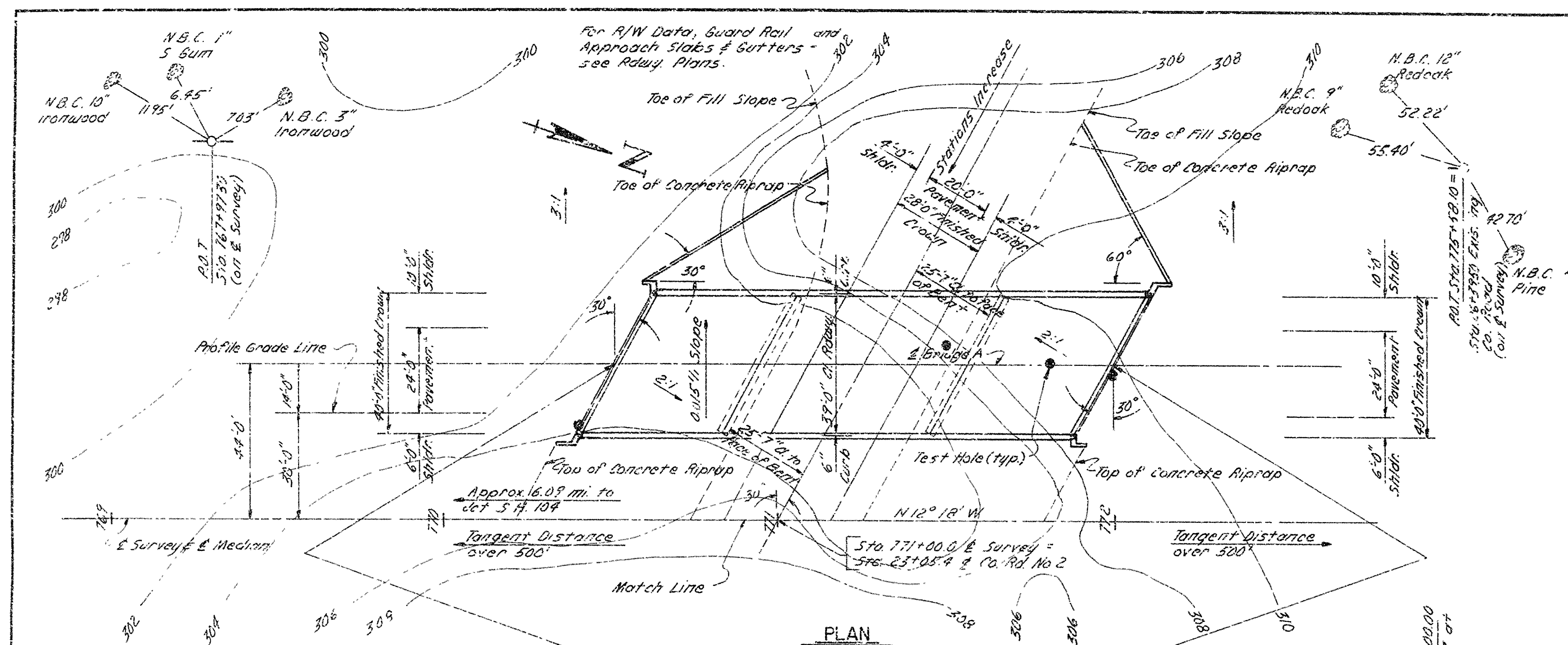
DESIGN SPECIFICATIONS: AASHTO 1973 AND 1974 INTERIM SPECIFICATIONS.

LIVE LOADING: HS20

METHOD OF DESIGN: SUPERSTRUCTURE - SERVICE LOAD DESIGN
SUBSTRUCTURE - LOAD FACTOR DESIGN

INIT STRESSES:

SUPERSTRUCTURE:	
COMPRESSIVE STRENGTH OF CLASS 5(A) CONCRETE (N-40)	= 3,500 PSI
YIELD STRENGTH OF REINFORCING STEEL	= 40,000 PSI
YIELD STRENGTH OF STRUCTURAL STEEL (A-36)	= 36,000 PSI
YIELD STRENGTH OF STRUCTURAL STEEL (A-572-50)	= 50,000 PSI
SUBSTRUCTURE:	
COMPRESSIVE STRENGTH OF CLASS S CONCRETE (N-10)	= 3,000 PSI
YIELD STRENGTH OF REINFORCEMENT	= 40,000 PSI



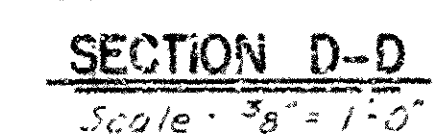
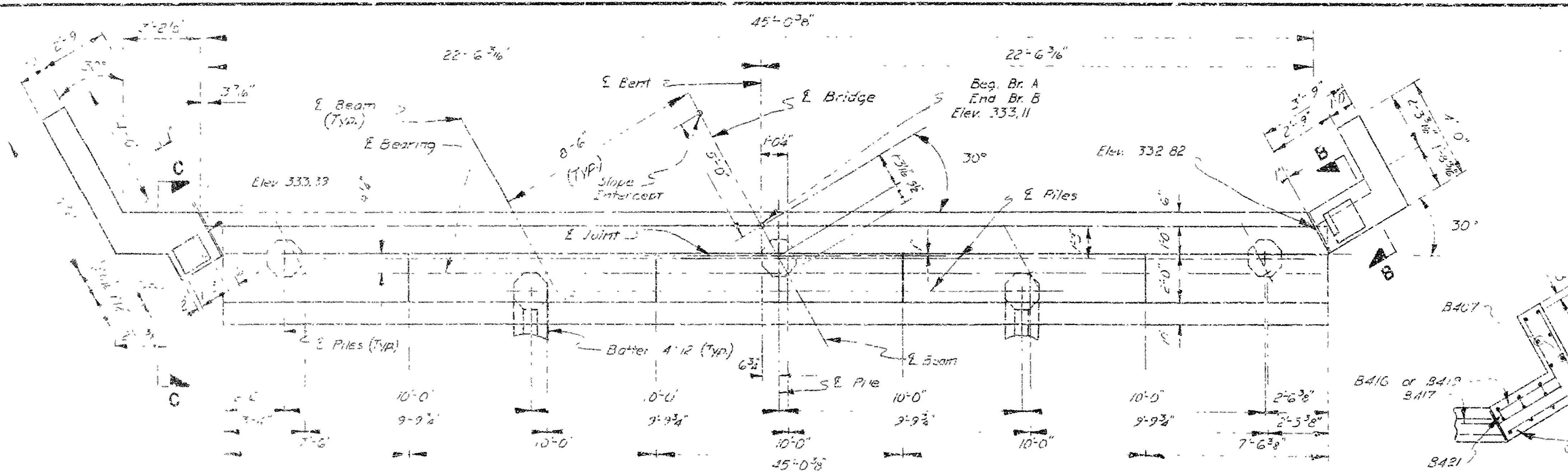
SHEET 1 OF 2
LAYOUT OF BRIDGES
OVER JEFFERSON ROAD
HIGHWAY 104-JEFFERSON ROAD
JEFFERSON COUNTY
ROUTE 65 SEC. 14
ARKANSAS STATE HIGHWAY COMMISSION
LITTLE ROCK, ARK.
DRAWN BY: U.P.S. DATE: 5-1-74
DESIGNED BY: E.E.S. DATE: 2-21-74
CHECKED BY: H.D. DATE: 10-6-74
SCALE: 1"=20'-0"
BRIDGE NO. 5612 A DRAWING NO. 19039

David Pinkerton
BRIDGE ENGINEER

DATE REQUESTED	DATE FILMED	DATE FORWARDED	DATE FILMED	PC. ROAD NO.	STATE	FED. AID PROJ. NO.	SWT. 7 NO.	TOTAL SHEETS
3-21-75	3-3-75			6	ARK	EAC PF 025-2(32)		
				JOS NO.		2783	52	211

(1) 56:2 A - END BT DTL'S - 19041

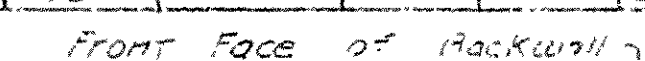
① 5612 A - END BT DTL'S - 19041



BAR LIST- PER END BENT (SENT 1 BRIDGE A)
(SENT 4 BRIDGE B)

MR	NEW'D	LENGTH	A	B	PIN DIA.	BENDING DIAGRAMS
B401	46	11'-4"			2"	
B402	15	7'-0"			3"	
B403	45	5'-11"	1'-2"	3"	2"	
B404	90	5'-8"			STR.	
B405	20	3'-4"			STR.	
B406	2	7'-8"	4'-7"	3'-1"	2"	
B407	26	6'-5"			STR.	
B408	4	6'-7"	2'-3 1/2"	3'-7 1/2"	2"	
B409	7	11'-2"	5'-10"	5'-4"	2"	
B410	1	9'-5"	4'-11"	4'-1 1/2"	2"	
B411	* 5	10'-1"	5'-1"	5'-0 1/2"	2"	
B412	1	3'-5"	5'-4"	3'-11"	2"	
B413	4	5'-2"	2'-4"	1'-6"	2"	
B414	1	2'-2"			STR.	
B415	7	8'-9"	3'-7"	3'-7"	2"	
B416	1	6'-10"	2'-5"	2'-11"	2"	
B417	5	7'-5"	2'-11"	2'-11"	2"	
B418	1	6'-10"	3'-7"	3'-4"	2"	
B419	2	4'-11"	2'-6"	2'-5"	2"	
B420	4	2'-2"			STR.	
B421	3	6'-8"	2'-4"	3'-7"	2"	
B422	4	4'-7"			STR.	
B423	6	4'-4"			3 1/2"	
B424	2	4'-1"	1'-0"	8'-2"	1 1/2"	
B425	16	4'-6"			STR.	

ALL REINFORCEMENTS ARE IN 1/4" SQUARE GRID



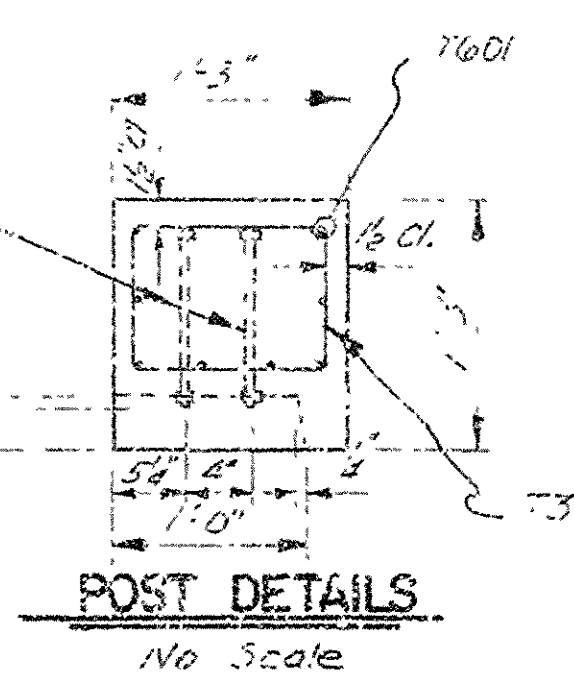
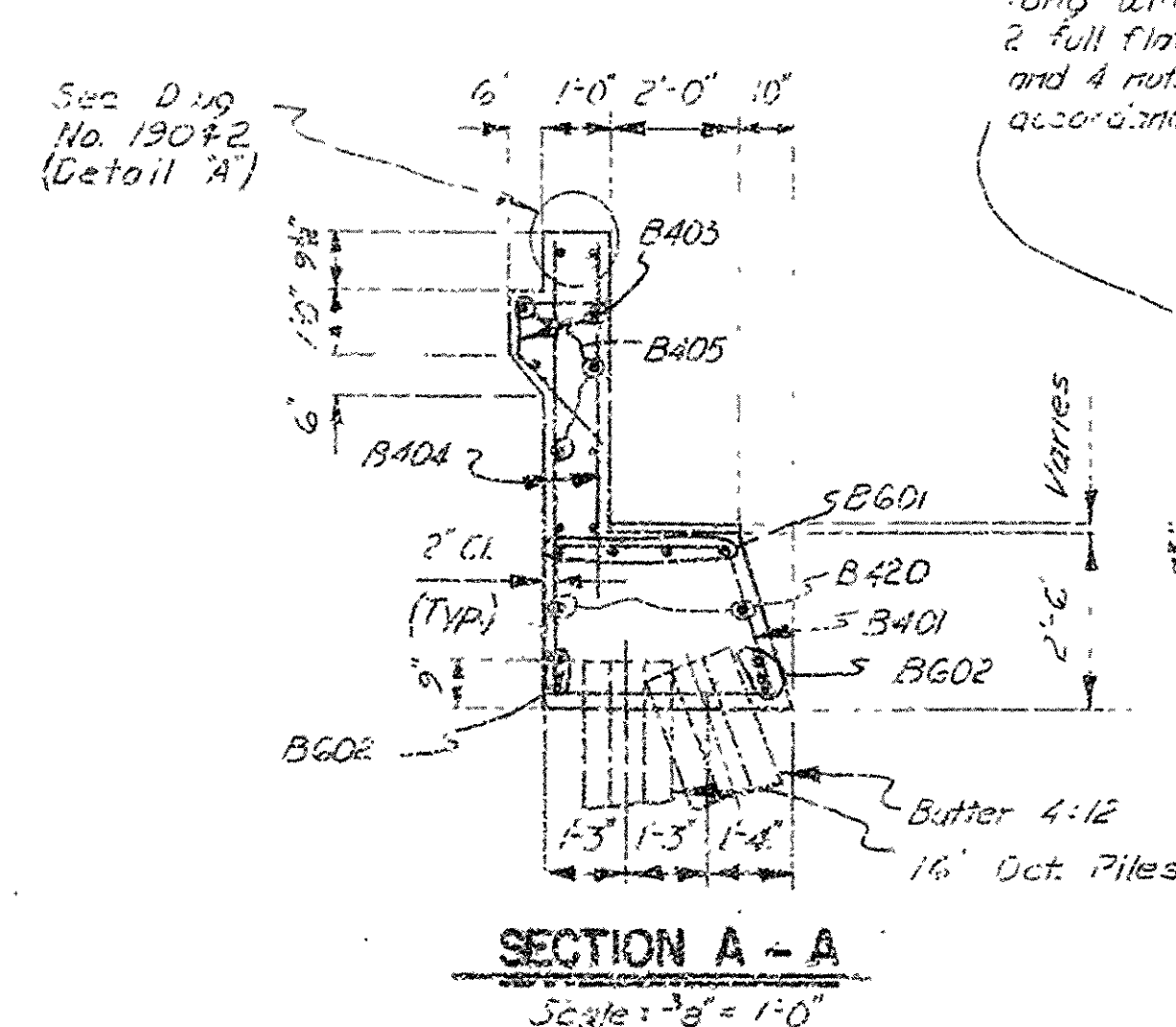
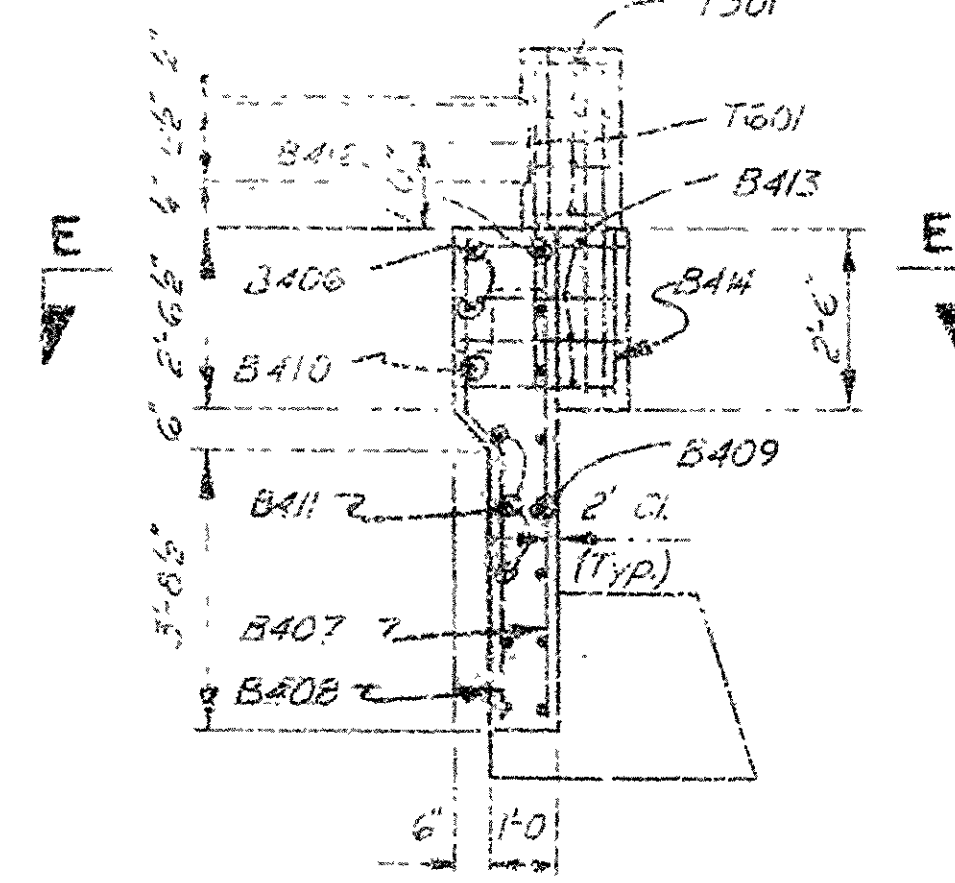
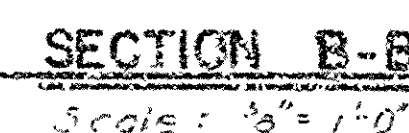
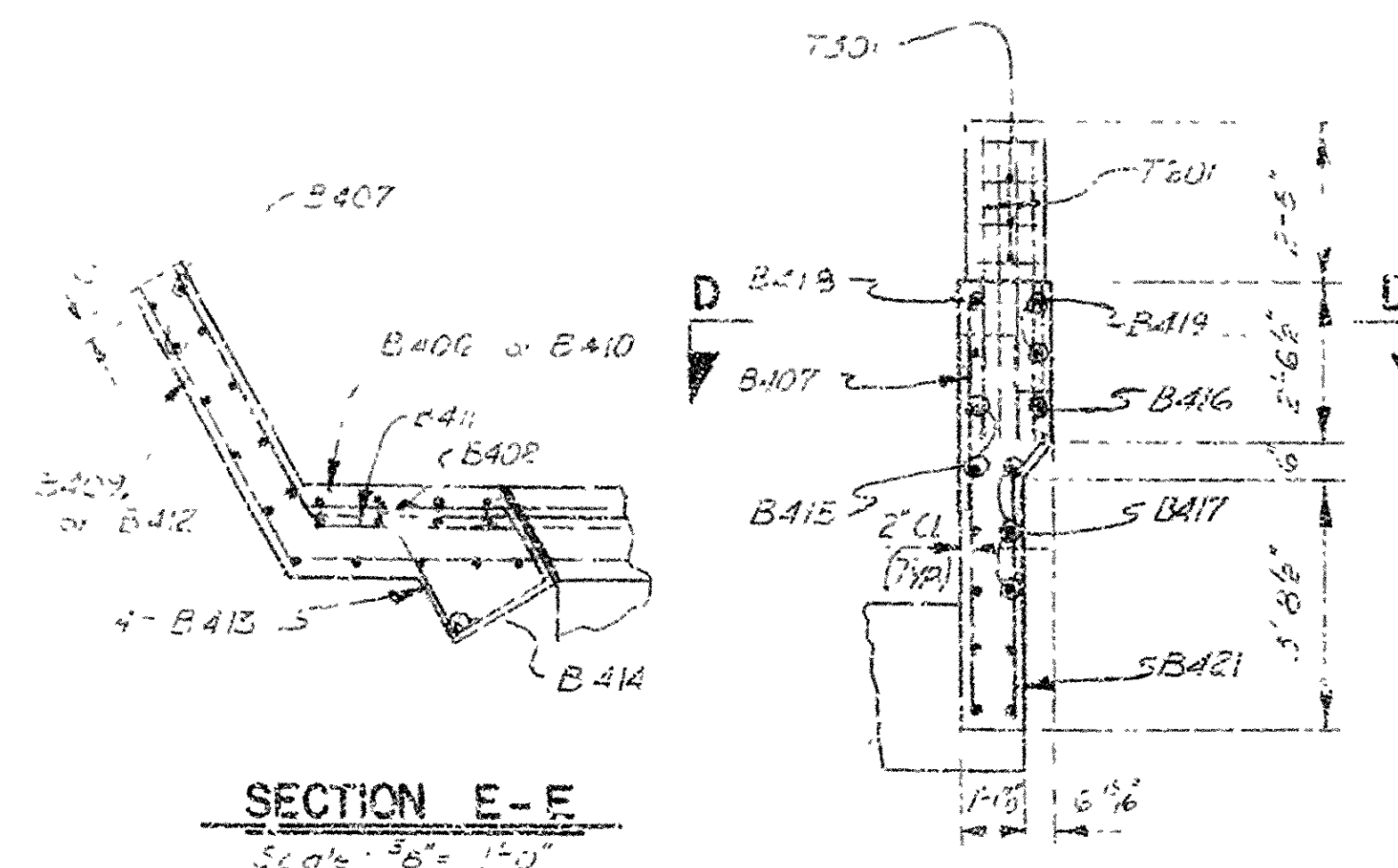
GENERAL NOTES:

ALL CONCRETE SHALL BE CLASS "S" AND SHALL BE POURED IN THE DRY. ALL EXPOSED CORNERS TO BE CHAMFERED 3/4" UNLESS OTHERWISE NOTED.
REINFORCING STEEL TO BE ASTM A615, GRADE 60.
SHOP LIST AND BENDING DIAGRAMS MUST BE SUBMITTED AND APPROVAL SECURED BEFORE FABRICATION IS BEGUN.

ALL STRUCTURAL STEEL IN END BENT SHALL BE A36.
ALL PILING SHALL BE 16" OCT. PRECAST PILING.

2-1/4" A325 hi - Strength Bolts 8
long with 2" threads, 2 clipped &
2 full flat washers, 1 double washer
and 4 nuts, all galvanized in
accordance with ASTM A153

△ Revised - Changed B406, B407 thru B412 & B415
thru B417 - As shown. 3-21-75 LDF



SHEET 1 OF 2
DETAILS OF END BENTS
BRIDGE OVER JEFFERSON ROAD
HIGHWAY 104—JEFFERSON ROAD
JEFFERSON COUNTY

ROUTE 65 SEC. 14

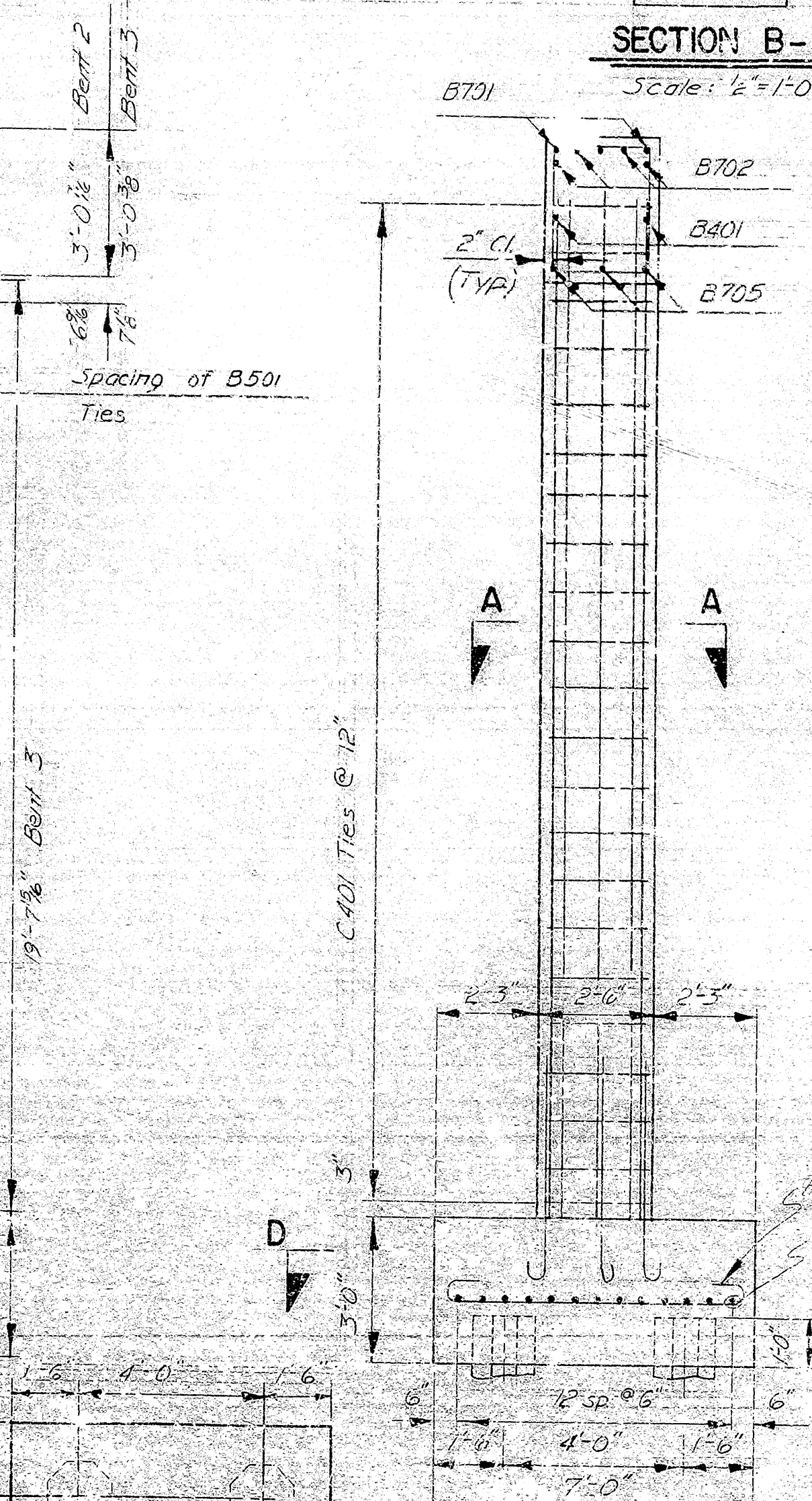
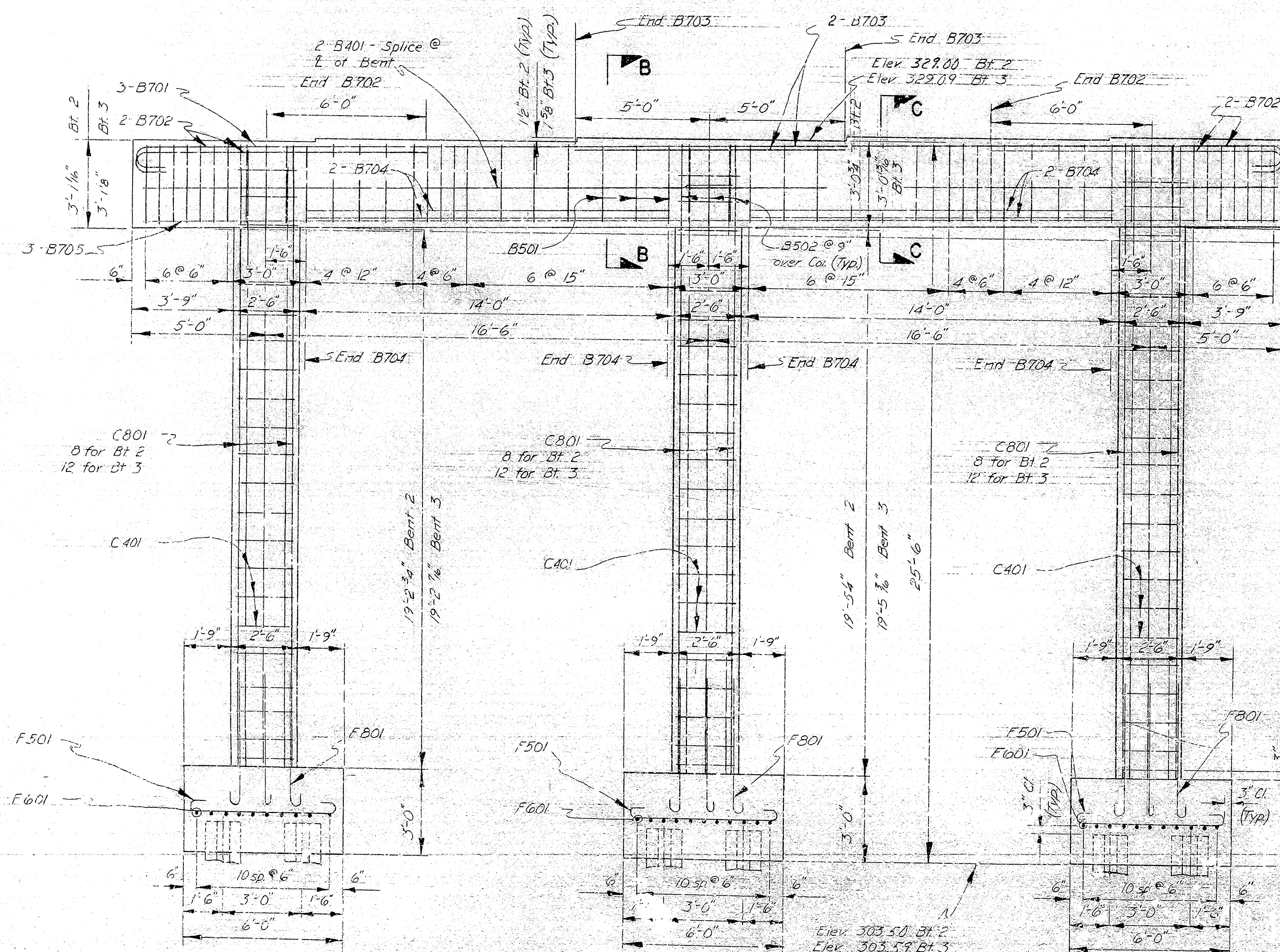
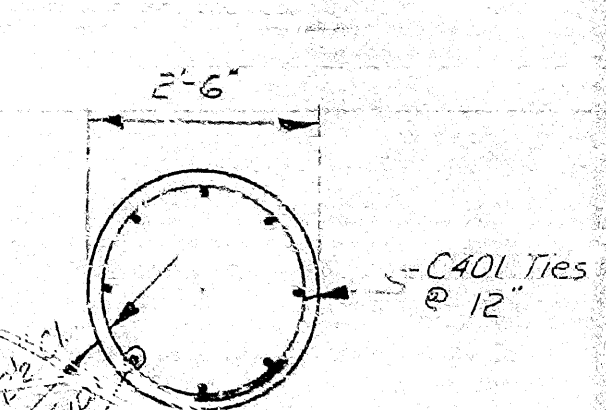
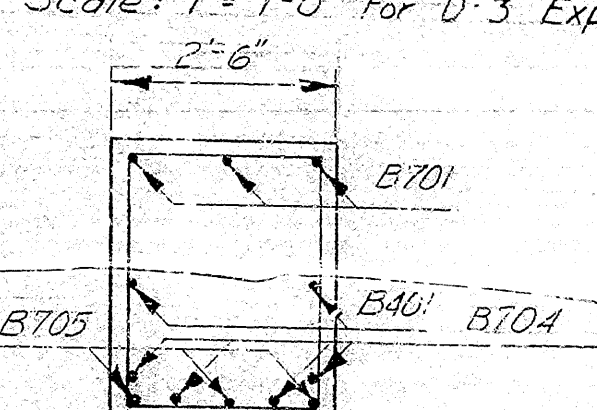
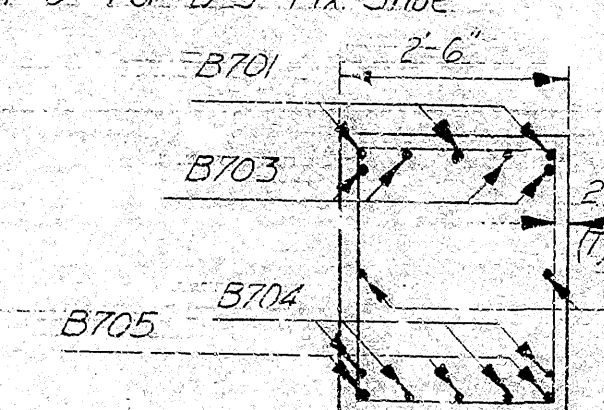
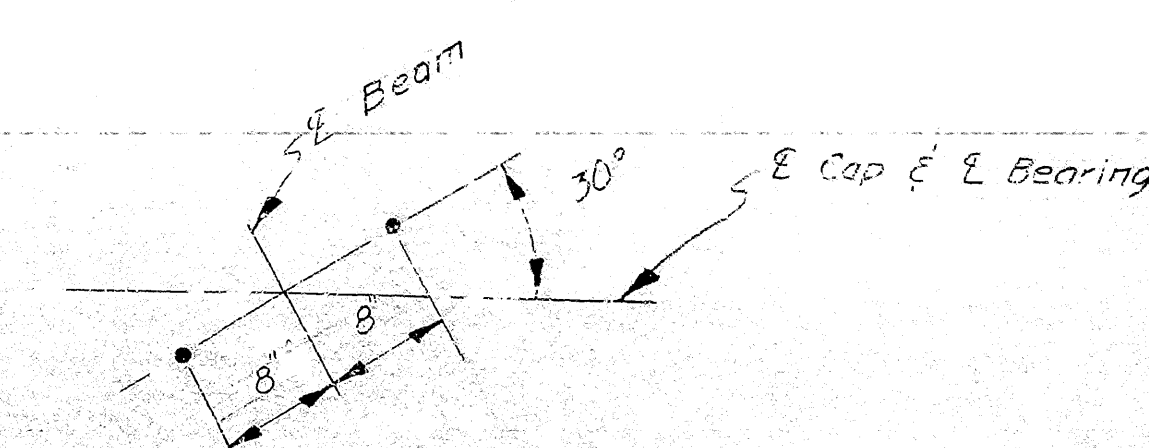
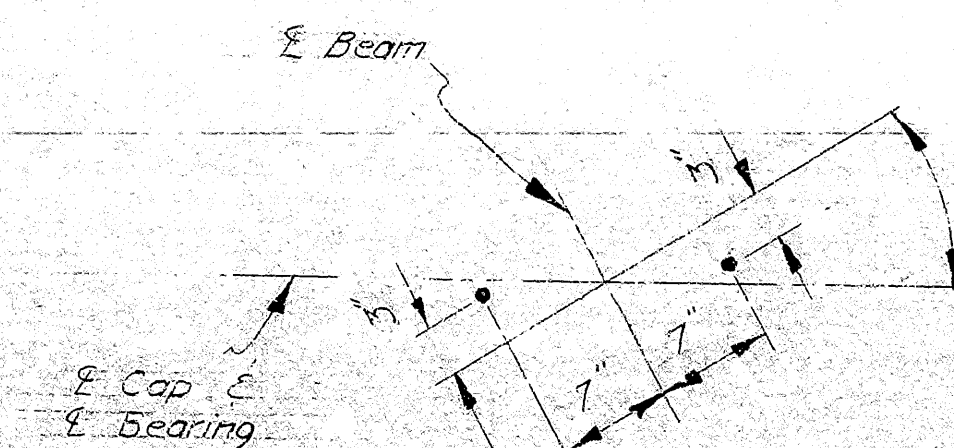
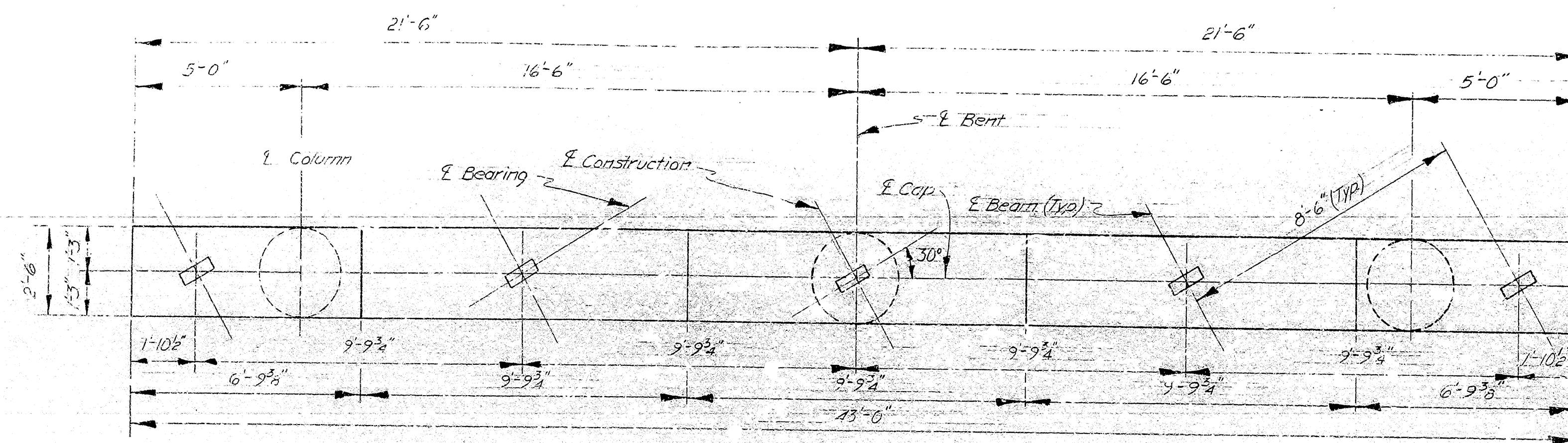
ARKANSAS STATE HIGHWAY COMMISSION

LITTLE ROCK, ARK.

DRAWN BY: TJB DATE: 3/10/74
DESIGNED BY: TPD DATE: JULY 74 SCALE: As Noted
CHECKED BY: CES DATE: 10/18/74

BRIDGE NO. 5612 ^A_B DRAWING NO. 19041

DATE REVISED	DATE FILMED	DATE REVISED	DATE FILMED	FED. NO. 10	STATE	FED. AID PROJ. NO.	SHEET NO.	TOTAL SHEETS
				6	ARK	EAC RF-025-2(32)	54	211
				JOB NO.	2783	54	211	
				5612A - BENT DTLS. - 19043				



BAR LIST - PER BENT

MR.	NO.	REOD	LENGTH	A	B	FIN.	DIA.	BENDING DIAGRAMS
B401	4	4	22'-2"			Str.		
B501	14	14	7'-0"	2'-2"	2'-8"	22		
B502	2	2	7'-4"	2'-2"	2'-8"	22		
B701	3	3	43'-0"	42'-0"	7'	54"		
B702	8	8	11'-8"	10'-10"	7'	54"		
B703	4	4	10'-0"			Str.		
B704	9	8	13'-6"			Str.		
B705	3	3	42'-6"			Str.		
C401	66	66	8'-1"			Str.		
C801	24		22'-0"			Str.		
C801	36		22'-0"			Str.		
F501	39	39	6'-8"	5'-6"	5'	3 3/4"		
F601	33	33	7'-0"	6'-6"	6'	4 1/2"		
F801	24		6'-0"	5'-1"	8'	6"		
F801	36		6'-0"	5'-1"	8'	6"		

NOTE:

ALL CONCRETE SHALL BE CLASS "S" AND SHALL BE POURED IN THE DRY.
ALL EXPOSED CORNERS TO BE CHAMFERED 3/4" UNLESS OTHERWISE NOTED.
REINFORCING STEEL TO BE ASTM A615, GRADE 60.
SHOP LIST AND BENDING DIAGRAMS MUST BE SUBMITTED AND APPROVAL SECURED BEFORE FABRICATION IS BEGUN.
ALL PILING SHALL BE 16" OCT. PRECAST PILING.
METHOD OF DESIGN - LOAD-FACTOR DESIGN

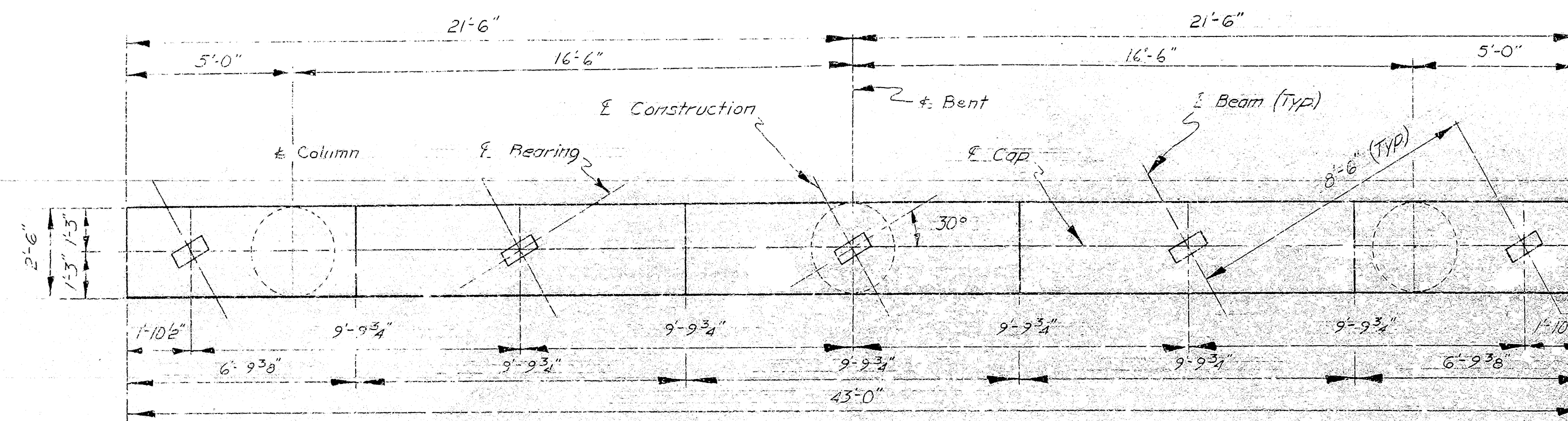
DETAILS OF INTERMEDIATE BENTS
JEFFERSON ROAD
HIGHWAY 104 - JEFFERSON ROAD
JEFFERSON COUNTY

ROUTE 65 SEC. 14
ARKANSAS STATE HIGHWAY COMMISSION

LITTLE ROCK, ARK.
DRAWN BY: TEB DATE: 8/13/74
DESIGNED BY: DV DATE: 8-76
CHECKED BY: TPD DATE: 8/29/74
BRIDGE NO. 5612 A DRAWING NO. 19043

BRIDGE ENGINEER

DATE REVISED	DATE FILMED	DATE REVISED	DATE FILMED	FED. ROAD NO.	STATE	FED. AID PROJ. NO.	SHEET NO.	TOTAL SHEETS
				6	ARK.	54C RF025-2(32)		
				JOB NO.		2783	55	211
						5612 B - BENT DTL 5 -		19044



PLAN

Scale: 3/8" = 1'-0"

ANCHOR BOLT LAYOUT - BT. 2

Scale: 1" = 1'-0"
Type: D-3, Exp. Shoe

ANCHOR BOLT LAYOUT - BT. 3

Scale: 1" = 1'-0"
Type: D-3, Exp. Shoe

BAR LIST - PER BENT

BAR	NO.	REQ'D	LENGTH	A	B	PIV. DIA.	BENDING DIAGRAMS
B401	4	4	22'-2"	-	-	Str.	
B501	14	14	10'-9"	2'-2"	2'-8"	2 1/2"	
B502	9	9	7'-4"	2'-2"	2'-8"	2 1/2"	
B701	3	3	43'-8"	42'-0"	7"	5 1/4"	
B702	8	8	11'-8"	10'-10"	7"	5 1/4"	
B703	4	4	10'-0"	-	-	Str.	
B704	8	8	13'-6"	-	-	Str.	
B705	7	3	42'-6"	-	-	Str.	
C401	60	60	8'-2"	-	-	Cir.	
C801	30	24	20'-0"	-	-	Str.	
F501	39	39	6'-8"	5'-6"	5"	3 3/4"	
F601	33	33	7'-0"	6'-6"	6"	4 1/2"	
F801	30	-	6'-0"	5'-1"	8"	6"	
F801	24	-	6'-0"	5'-1"	8"	6"	

Dimensions are out to out of bars.

NOTE:

ALL CONCRETE SHALL BE CLASS "S" AND SHALL BE POURED IN THE DRY.
 ALL EXPOSED CORNERS TO BE CHAMFERED 3/4" UNLESS OTHERWISE NOTED.
 REINFORCING STEEL TO BE ASTM A615, GRADE 60.
 SHOP LIST AND BENDING DIAGRAMS MUST BE SUBMITTED AND APPROVAL SECURED BEFORE FABRICATION IS BEGUN.
 ALL PILING SHALL BE 16" OCT. PRECAST PILING.
 METHOD OF DESIGN - LOAD FACTOR DESIGN

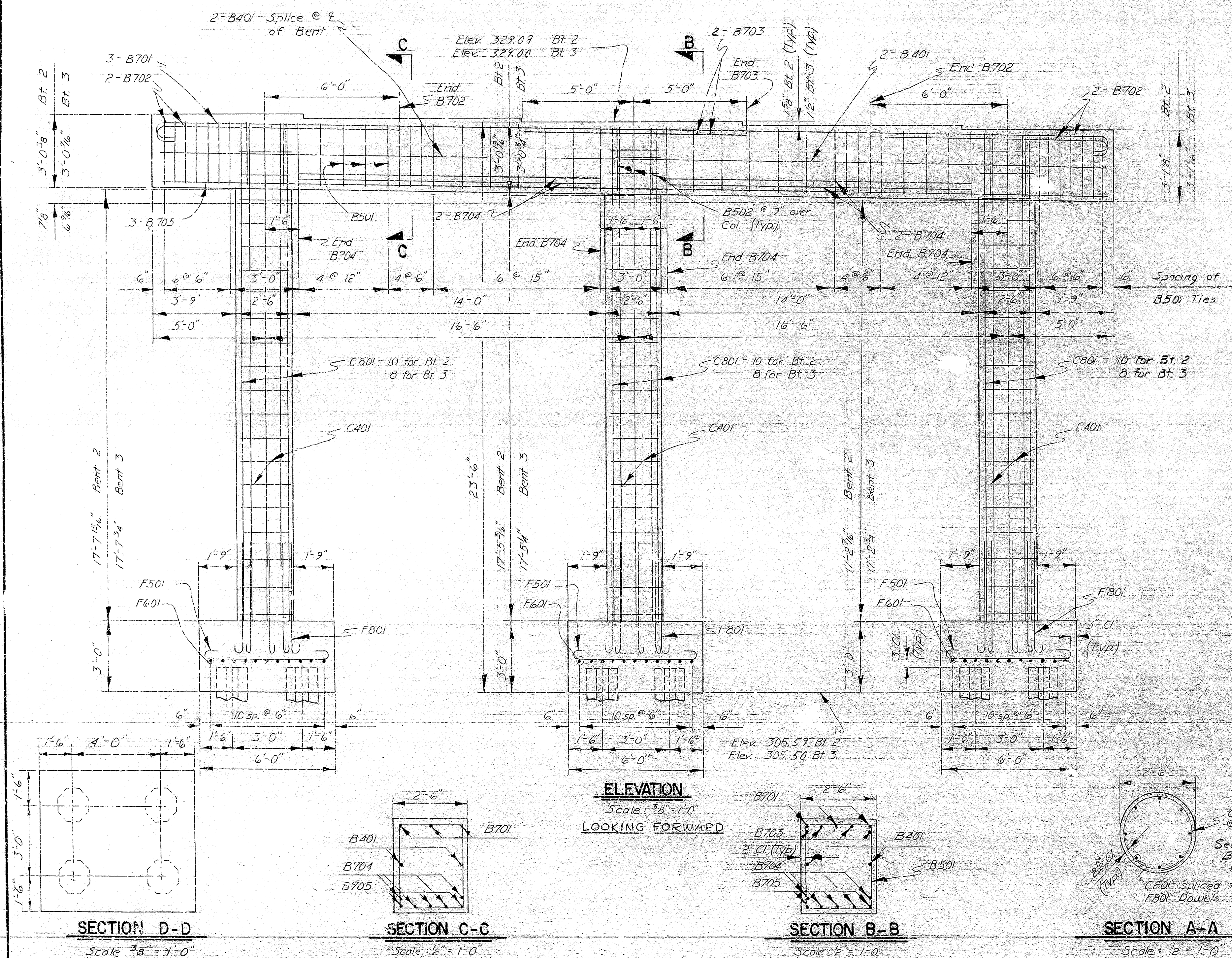
DETAILS OF INTERMEDIATE BENTS
 JEFFERSON ROAD
 HIGHWAY 104 - JEFFERSON ROAD
 JEFFERSON COUNTY

ROUTE 65 SEC. 14
 ARKANSAS STATE HIGHWAY COMMISSION
 LITTLE ROCK, ARK.

DRAWN BY: TEB DATE: 8/22/74
 DESIGNED BY: DV DATE: 8-74
 CHECKED BY: JPD DATE: 8/29/74

BRIDGE NO. 5612 B DRAWING NO. 19044

David Pinkerton
 BRIDGE ENGINEER



ELEVATION

Scale: 3/8" = 1'-0"
LOOKING FORWARD

SECTION D-D

Scale: 3/8" = 1'-0"

SECTION C-C

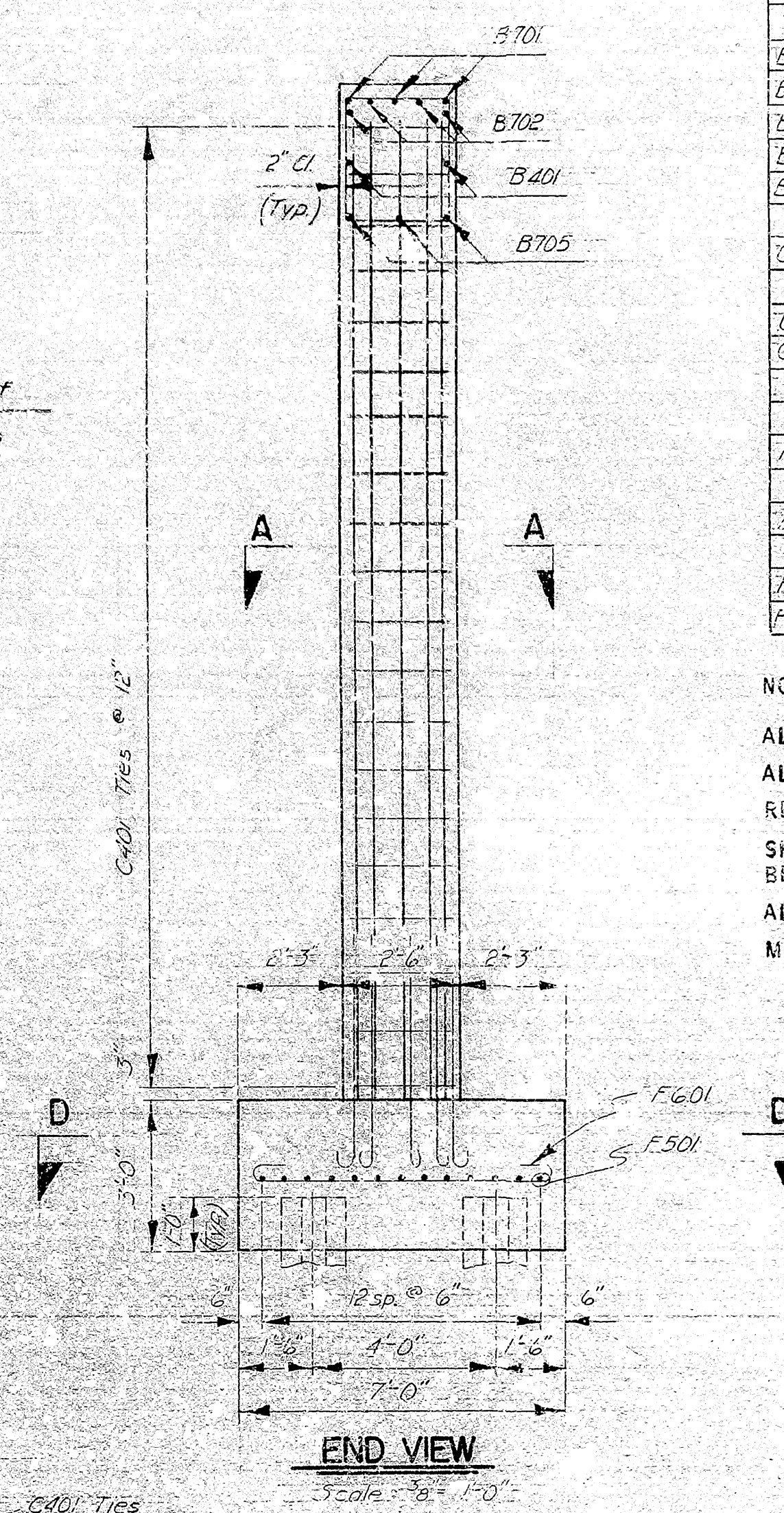
Scale: 1/2" = 1'-0"

SECTION B-B

Scale: 1/2" = 1'-0"

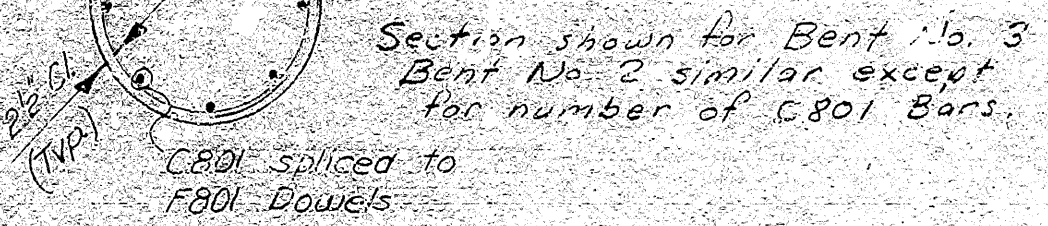
SECTION A-A

Scale: 1/2" = 1'-0"



END VIEW

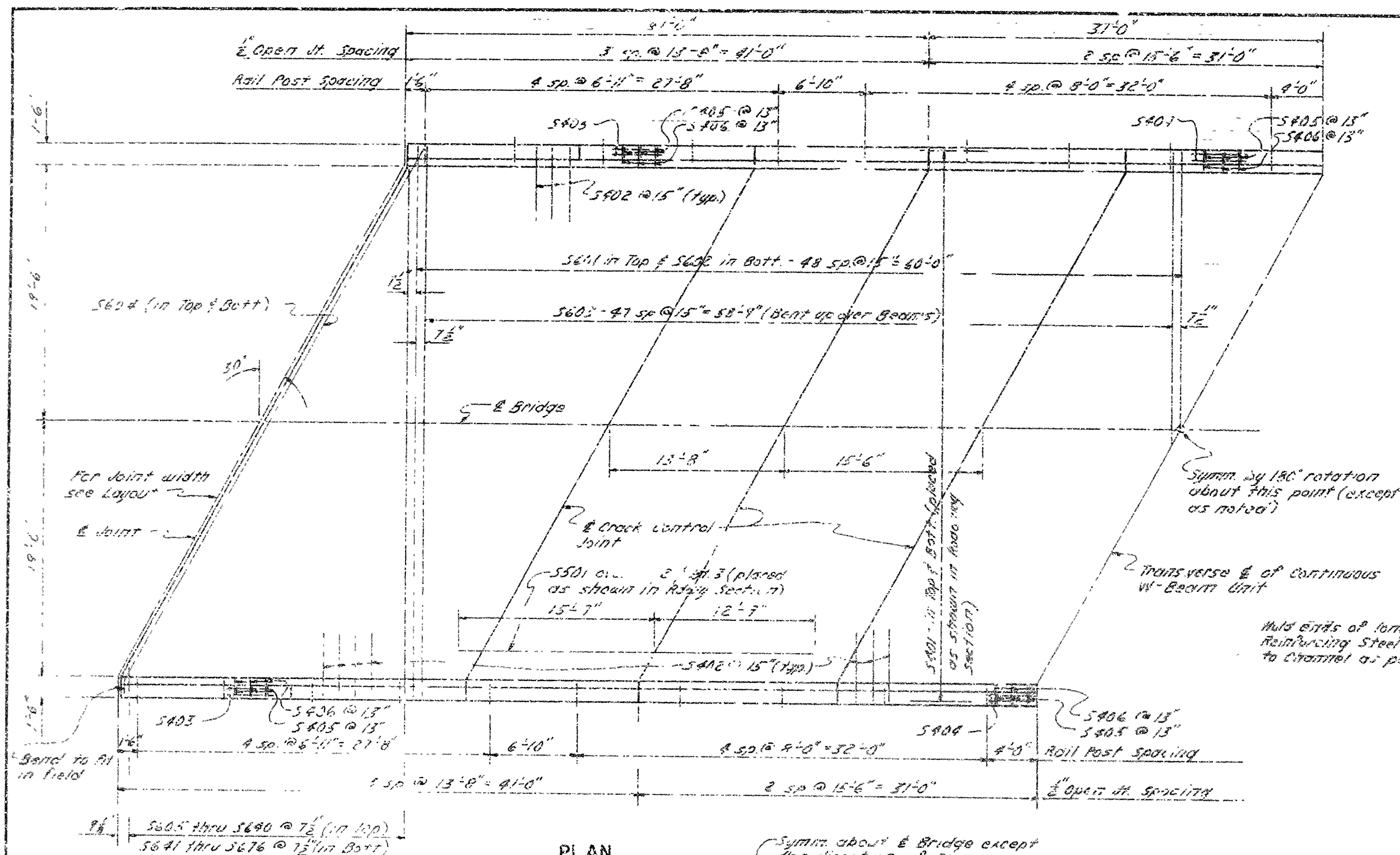
Scale: 3/8" = 1'-0"



Section shown for Bent No. 3
 Bent No. 2 similar except
 for number of C801 Bars.

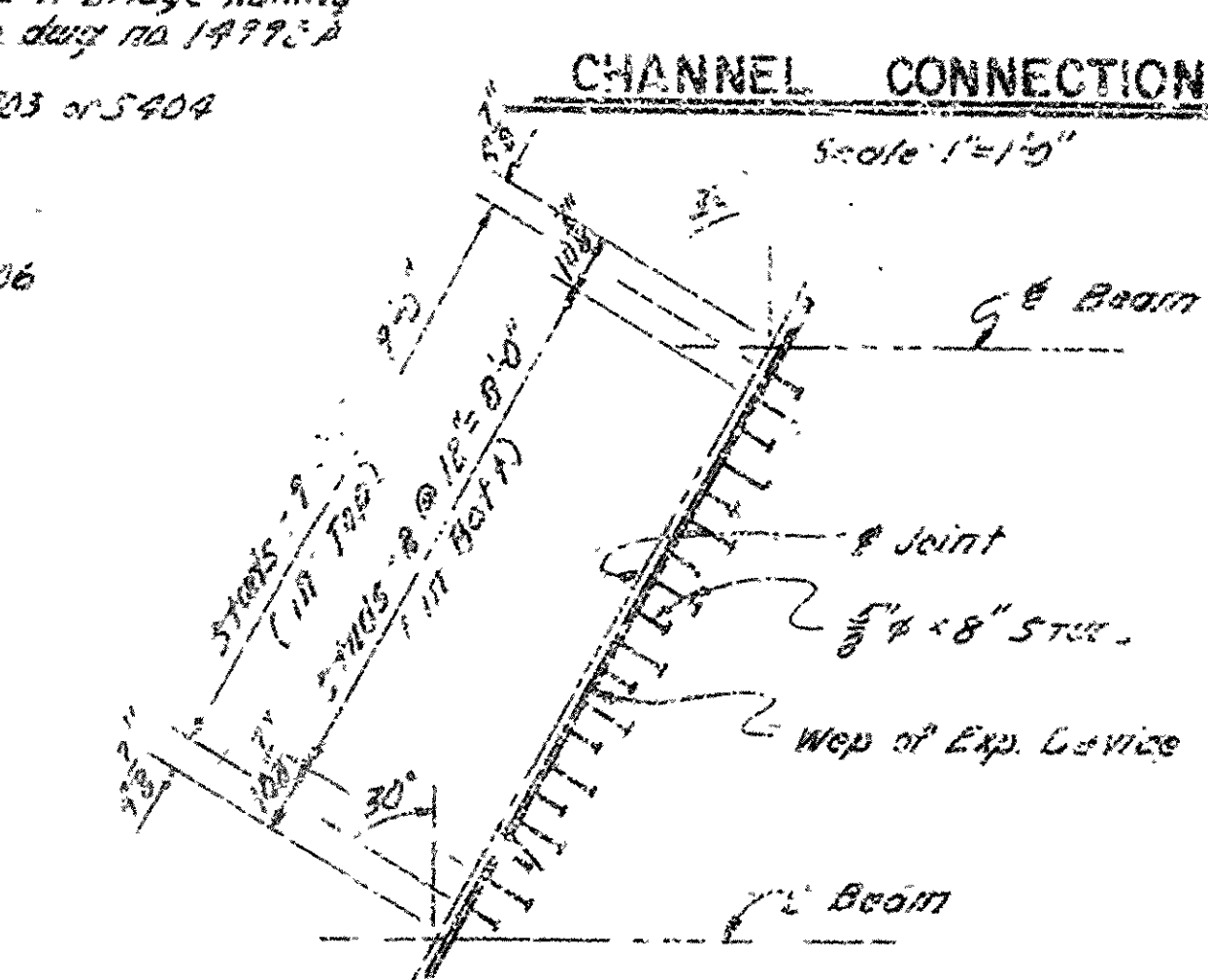
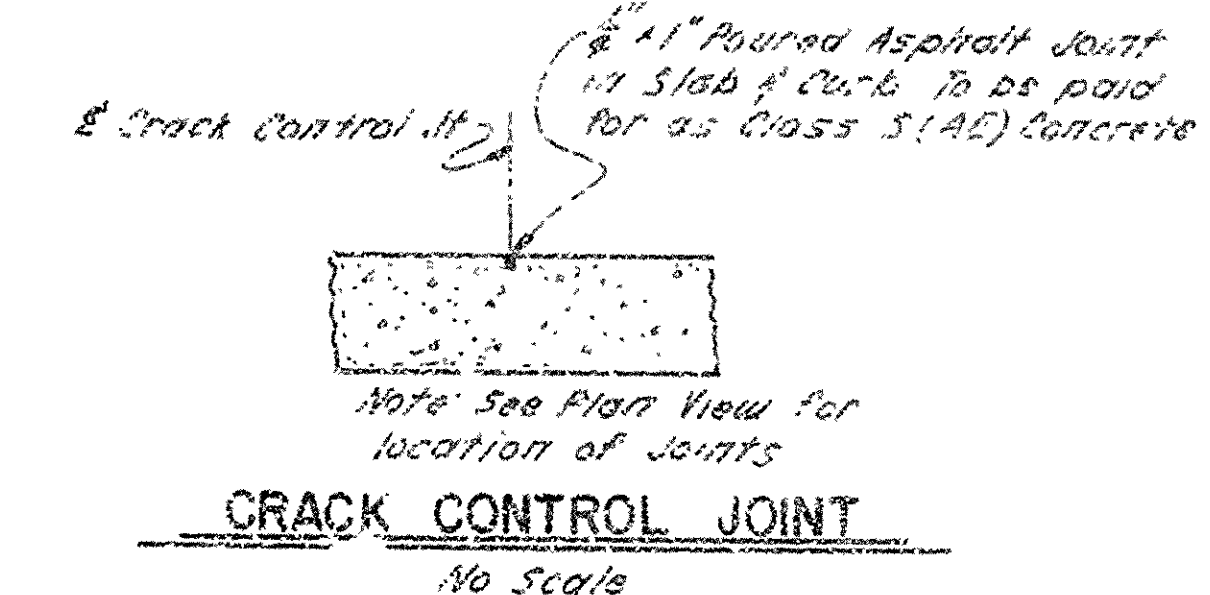
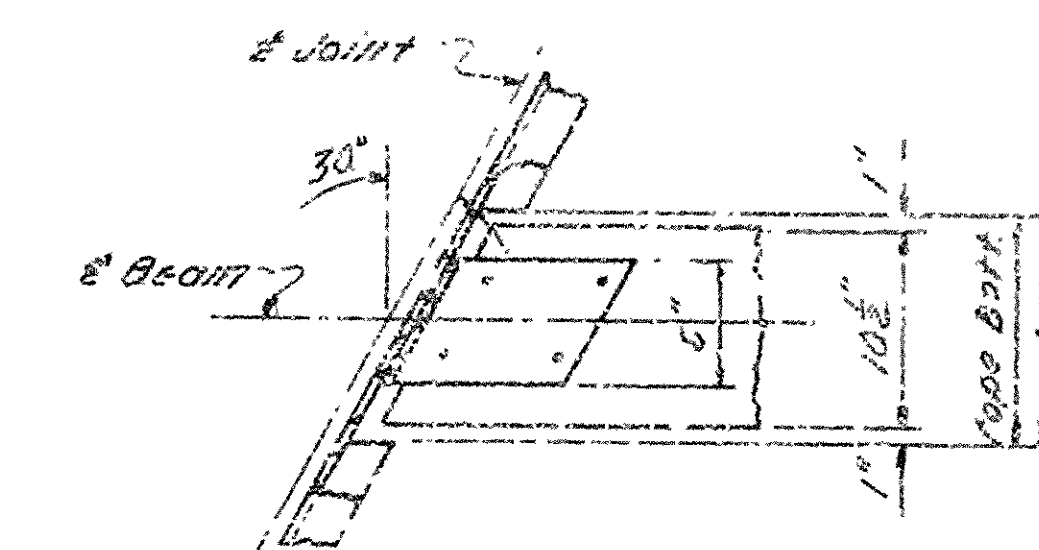
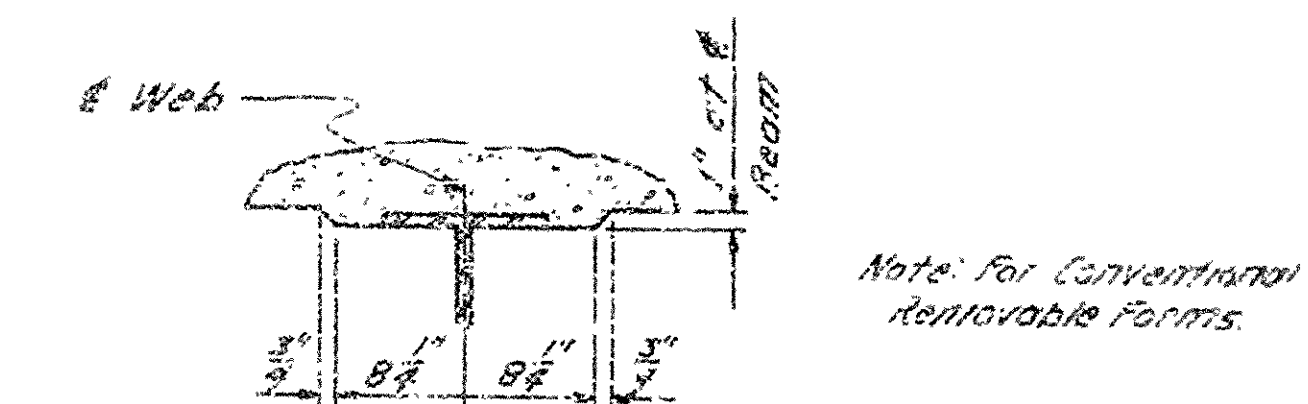
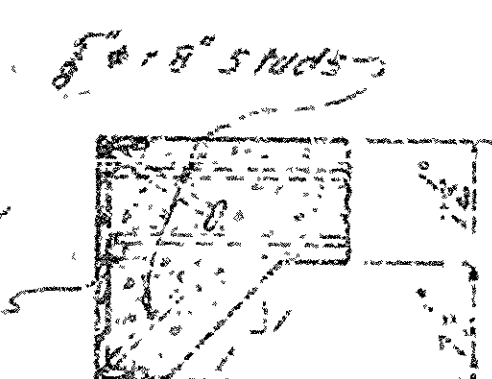
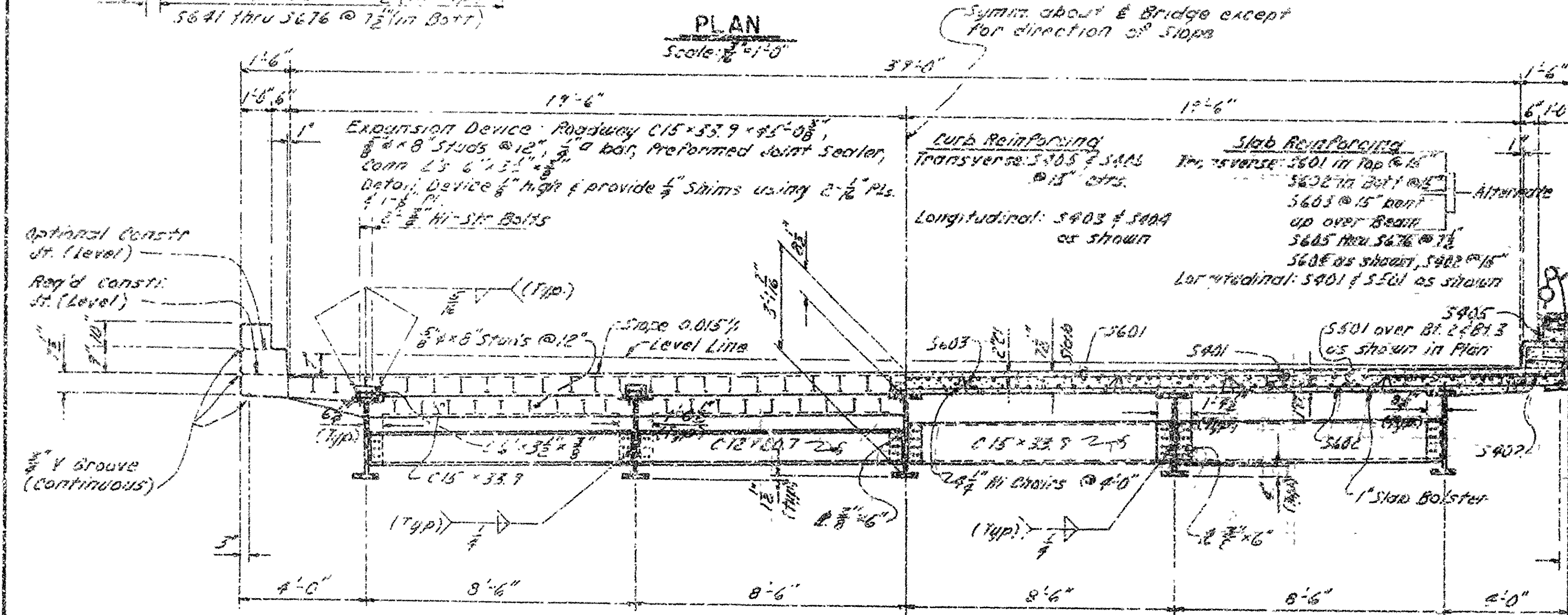
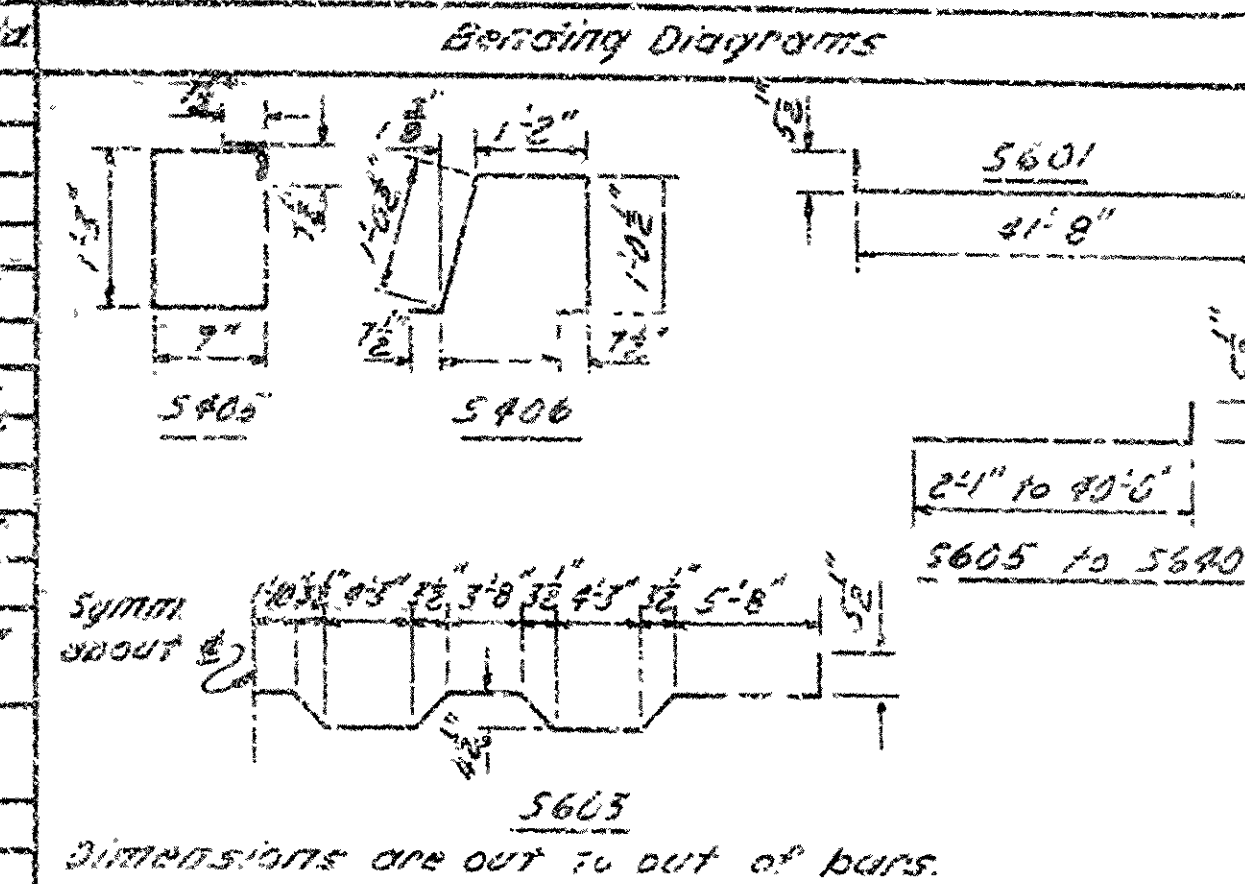
DATE REVERED	DATE PLUGED	DATE REVERED	DATE PLUGED	FBI ROAD NO.	STATE	FED. AID PROJ. NO.	CHECK NO.	TOTAL SECURITY
3-21-75	6/9-7215			6	ARK.	EAC KF-0022(30)		
				JOB NO.		2783	56	211

① SC12A, B SPAN DTLS. 19045



BAR LIST - 144' UNIT

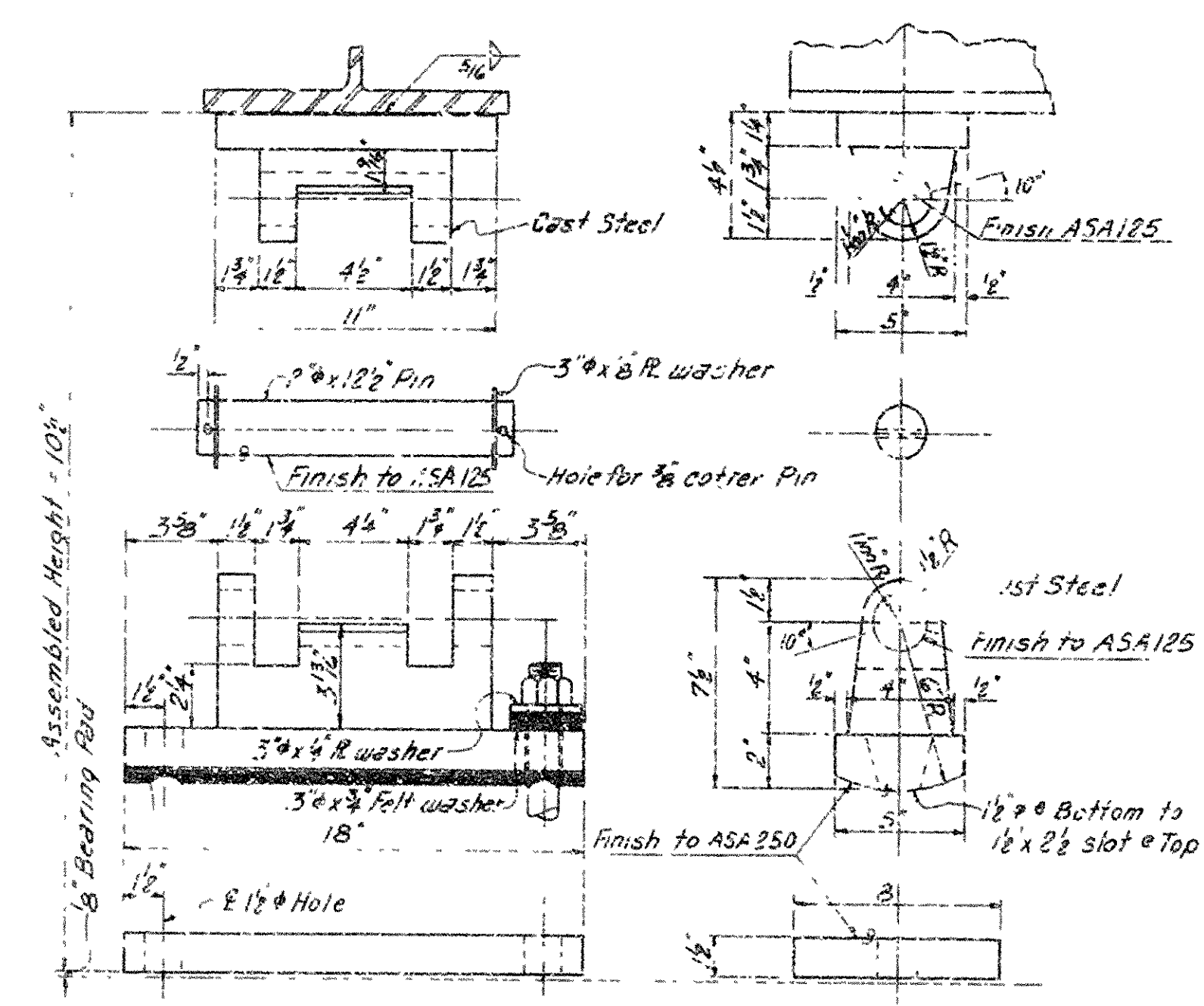
Mk.	No. Reg'd	Length	Pin D.
5401	600	37-12"	5 1/2"
5402	600 230	5-6"	5 1/2"
5403	24	15-3"	5 1/2"
5404	16	18-1"	5 1/2"
5405	276	4-10"	2"
5406	276	4-8"	2"
5407	112	28-5"	5 1/2"
5601	47	22-4"	5 1/2"
5602	47	41-8"	5 1/2"
5603	96	47-9"	5 1/2"
5604	4	47-11"	5 1/2"
5605	200	25-5" 16	3 3/4"
5606		46-4"	
5607		29-7"	
5676	200	40-0"	5 1/2"



▲ Revised-Changed 3402-As Shown. 3-21-75 LDF

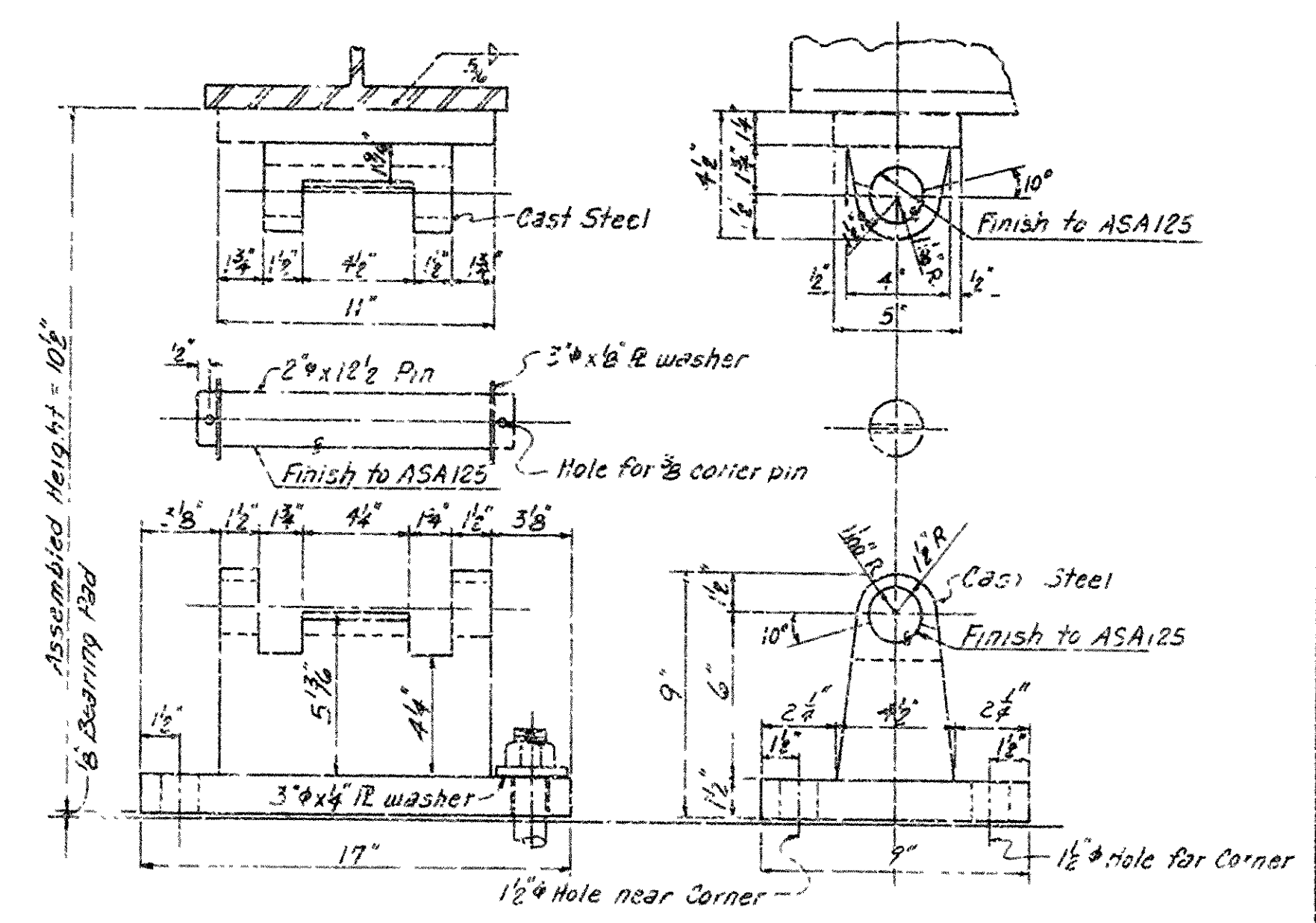
SHEET 1 OF 3
DETAILS OF 144'-0" CONTINUOUS
W-BEAM UNIT
JEFFERSON ROAD
HIGHWAY 104-JEFFERSON ROAD
JEFFERSON COUNTY
ROUTE 65 SEC. 14

ARKANSAS STATE HIGHWAY COMMISSION
 LITTLE ROCK, ARK.
 DRAWN BY: JRS DATE: 7-5-64
 DESIGNED BY: SES DATE: UNK SCALE: 35 TOTAL
 CHECKED BY: MD DATE: 7-2-74
 BRIDGE NO. 5612 DRAWING NO. 19045



TYPE DI EXPANSION SHOE

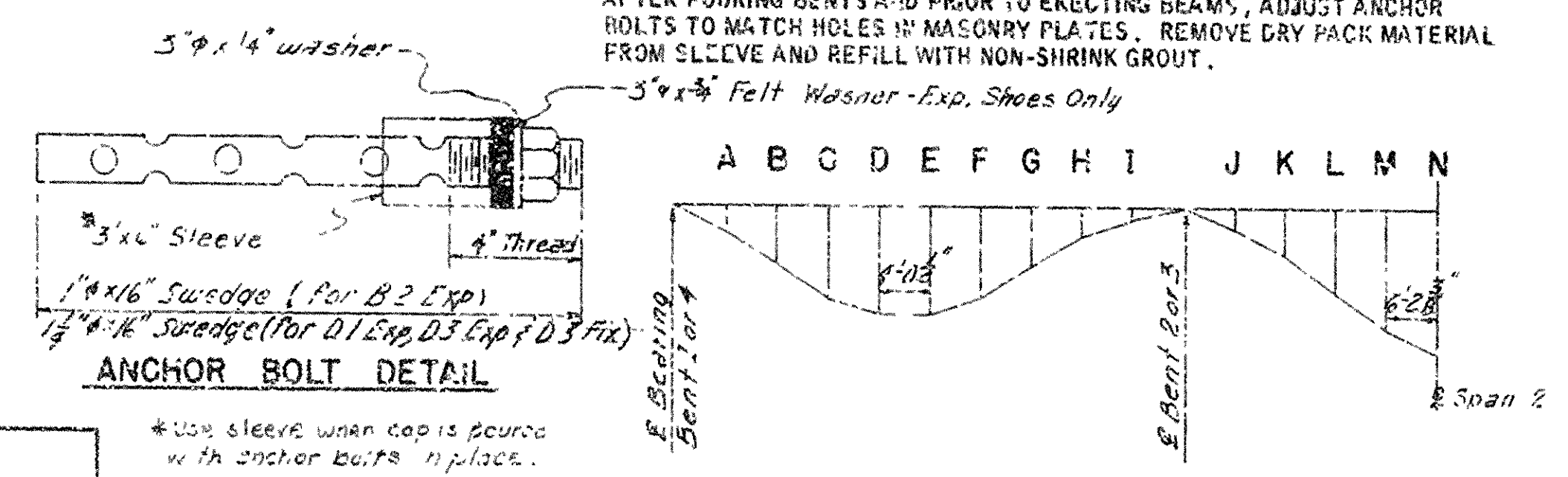
Material: Steel Castings ASTM A27 Grade 70-40, R ASTM A-36



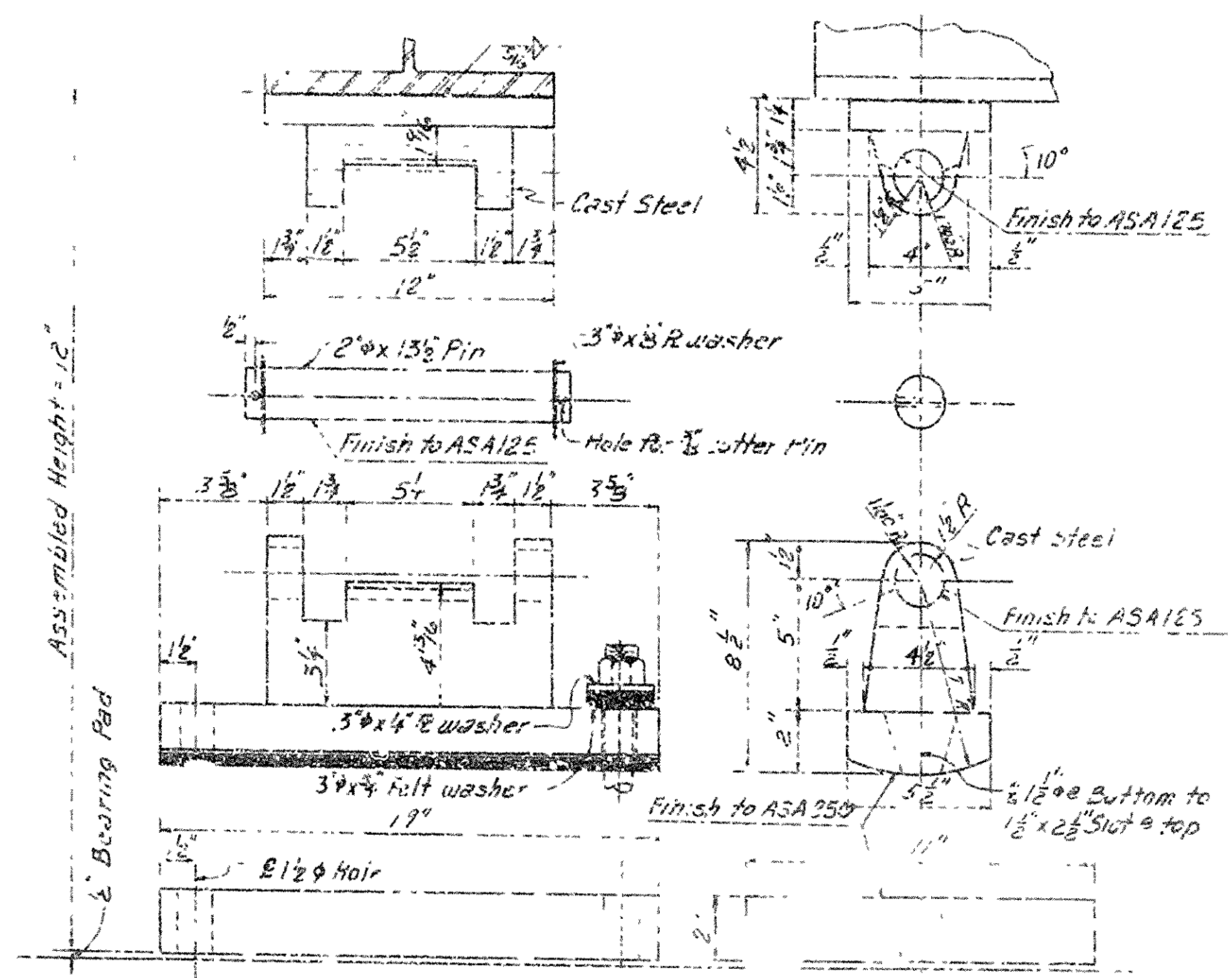
TYPE D3 FIXED SHOE

Material: Steel Castings ASTM A27 Grade 70-40

NOTE: 3" DIA. X 6" SHEET METAL SLEEVE. DRY PACK WITH STYROFOAM, OR URETHANE FOAM OR APPROVED EQUAL PRIOR TO POURING CONCRETE. AFTER POURING BENTS AND PRIOR TO ERECTING BEAMS, ADJUST ANCHOR BOLTS TO MATCH HOLES IN MASONRY PLATES. REMOVE DRY PACK MATERIAL FROM SLEEVE AND REFILL WITH NON-SHRINK GROUT.

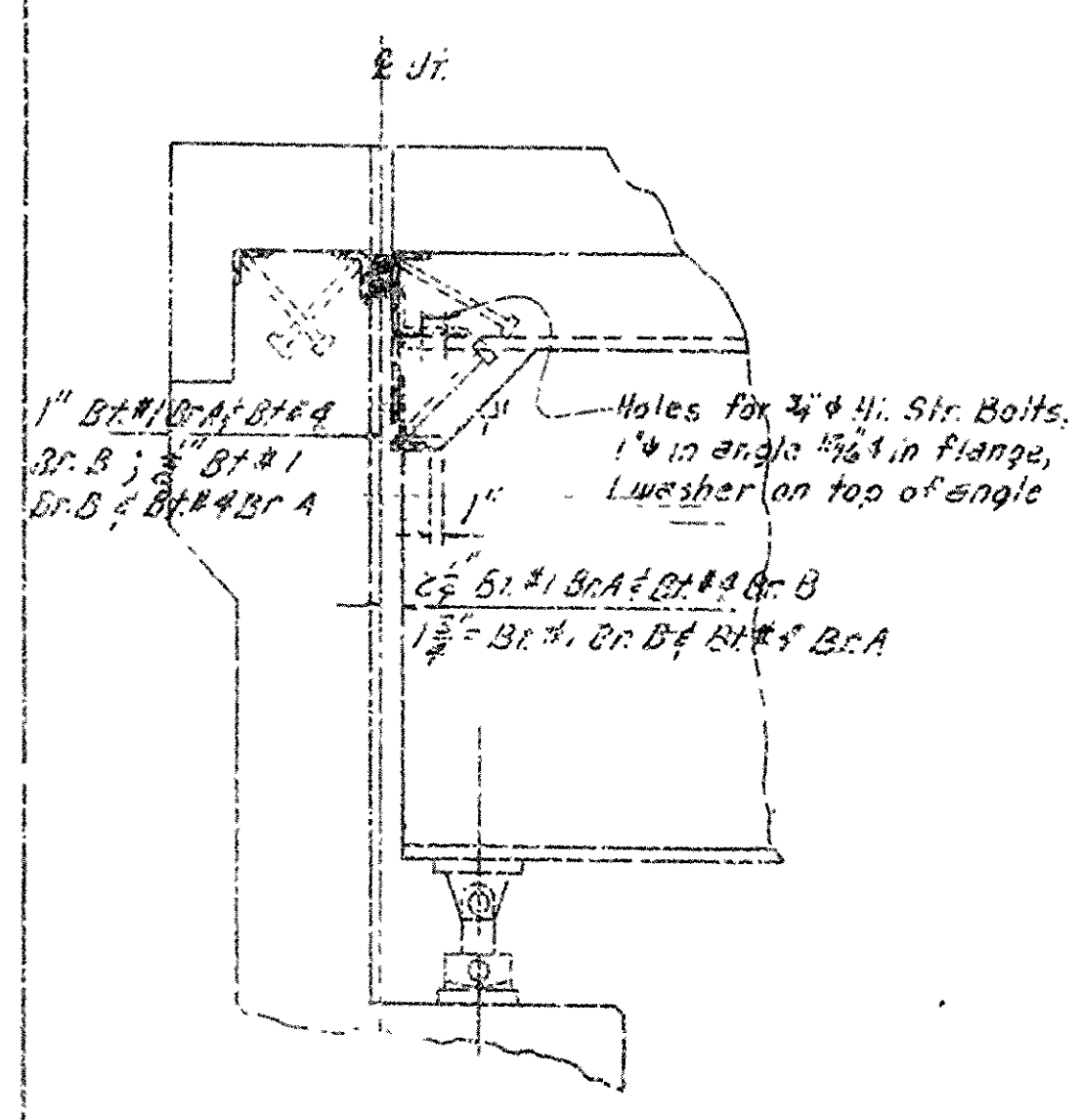


DEAD LOAD DEFLECTION



TYPE D3 EXPANSION SHOE

Material: Steel Castings ASTM A27 Grade 70-70, R ASTM A-36



JOINT AT END BENT
 $\Delta = 1.0''$

POINT OF DEFLEC.	WT. OF BEAM		WT. OF BEAM & SLAB		WT. OF BEAM, SLAB, CURB, RAIL	
	INT.	EXT.	INT.	EXT.	INT.	EXT.
A	.004	.004	.086	.096	.030	.030
B	.008	.008	.182	.202	.089	.089
C	.009	.009	.192	.202	.09	.11
D	.009	.009	.203	.203	.113	.113
E	.027	.007	.085	.085	.094	.094
F	.002	.002	.053	.053	.06	.060
G	.002	.002	.015	.015	.018	.018
H	.005	.004	.017	.017	.017	.017
I	.006	.006	.028	.028	.030	.030
J	.021	.02	.182	.185	.136	.136
K	.049	.049	.337	.337	.369	.369
L	.075	.075	.519	.519	.566	.566
M	.072	.072	.645	.645	.702	.702
N	.079	.079	.870	.870	.951	.951

CAMBER FOR DEAD LOAD DEFLECTION PLUS VERTICAL CURVE
±4" TOLERANCE. DEFLECTIONS SHOWN ARE FROM A CHORD
FROM CENTERLINE BEARING TO CENTERLINE BEARING.
VERTICAL CURVE CORRECTIONS NOT INCLUDED. NEGATIVE
SIGN (-) INDICATES POINT ABOVE CHORD.

GENERAL NOTES-

ALL CONCRETE TO BE CLASS S4E5. ALL EXPLODED CORNERS TO BE CHAMFERED 3/4" UNLESS OTHERWISE NOTED.

FIELD CONNECTIONS TO BE BOLTED WITH HIGH STRENGTH BOLTS. BOLTS: 2" ϕ , OPEN HOLES 13/16" ϕ EXCEPT WHERE NOTED OTHERWISE. BOLT SPACING SHALL BE 2 1/2" UNLESS OTHERWISE NOTED. MINIMUM EDGE DISTANCE SHALL BE 1 1/4" UNLESS NOTED OTHERWISE. BOLTS SHALL BE PLACED WITH HEADS ON THE OUTSIDE FACE OF EXTERIOR BEAM AND ON BOTTOM OF BEAM FLANGES. FIELD SPLICES: USE 7/8" ϕ , OPEN HOLES 15/16" ϕ .

STRUCTURAL SHAPES OF EQUAL OR GREATER STRENGTH MAY BE SUBSTITUTED FOR SHAPES SHOWN, BUT PAYMENT WILL BE MADE ON THE BASIS OF SHAPES SHOWN.

ALL WELDING SHALL CONFORM TO THE AMERICAN WELDING SOCIETY STANDARD SPECIFICATIONS FOR WELDED HIGHWAY AND RAILWAY BRIDGES, CURRENT EDITION.

SHOW PAINT: ALL STRUCTURAL STEEL EXCEPT GALVANIZED MEMBERS, CONTACT SURFACES OF BOLTED CONNECTIONS, AND SURFACES WITHIN 3" OF HOLES AND FIELD WELDS, AND SURFACES IN CONTACT WITH CONCRETE SHALL BE GIVEN ONE PRIME COAT AS SPECIFIED IN SECTION 807.59 OF THE STANDARD SPECIFICATIONS.

FIELD PAINT: AFTER ERECTION ALL EXPOSED STEEL SURFACES WHICH DO NOT RECEIVE A COAT OF SHOP PAINT EXCEPT SURFACES IN CONTACT WITH CONCRETE SHALL BE GIVEN ONE COAT AS SPECIFIED IN 807.59. IF 6 ADDITIONAL COATS OF FIELD PAINT SHALL BE APPLIED TO ALL EXPOSED SURFACES. FIRST COAT - RED LEAD TINTED WITH LAMP BLACK, SECOND COAT - ALUMINUM PAINT.

BEARINGS SHALL BE FINALLY SEATED IN ACCORDANCE WITH SEC. 807.05(2) OF THE STANDARD SPECIFICATIONS. THIS WORK AND MATERIAL IS TO BE CONSIDERED AS SUBSIDIARY TO THE ITEM OF "STRUCTURAL STEEL" AND WILL NOT BE PAID FOR DIRECTLY. THESE DRAWINGS SHOW GENERAL FEATURES OF DESIGN ONLY. SHOP DRAWINGS SHALL BE MADE IN ACCORDANCE WITH THE SPECIFICATIONS, SUBMITTED AND APPROVAL SECURED BEFORE FABRICATION IS BEGUN. ANCHOR BOLTS SHALL BE GALVANIZED TO CONFORM TO ASTM SPECIFICATIONS, DESIGNATION A153.

REINFORCING STEEL TO BE ASTM A615, GRADE 60. THE REINFORCING STEEL IS TO BE ACCURATELY LOCATED IN THE FORMS AND FIRMLY HELD IN PLACE BY STEEL WIRE SUPPORTS, SUFFICIENT IN NUMBER AND SIZE TO PREVENT DISPLACEMENT DURING THE COURSE OF CONSTRUCTION. THE WIRE SUPPORTS WILL NOT BE PAID FOR DIRECTLY BUT WILL BE CONSIDERED SUBSIDIARY TO THE ITEM OF "REINFORCING STEEL". SHOP LISTS AND BENDING DIAGRAMS OF REINFORCING STEEL, INCLUDING WIRE SUPPORTS, SHALL BE SUBMITTED AND APPROVAL SECURED BEFORE FABRICATION IS BEGUN.

THE CONTRACTOR, AT HIS OPTION, MAY POUR BRIDGE SLAB CONTINUOUS OVER THE ENTIRE UNIT USING A RETARDING AGENT TO RETARD SET. NOT LESS THAN 72 HOURS SHALL ELAPSE BETWEEN POURING OF SLAB AND THE CURB SECTIONS. IF THE PARAPET IS NOT POURED WITH THE CURB, 48 HOURS SHALL ELAPSE BETWEEN POURING OF CURB AND PARAPET.

ALL CONCRETE SHALL BE POURED AND SCREENED OFF PRIOR TO INITIAL SET. THE CONCRETE DECK SHALL BE FINISHED IN ACCORDANCE WITH SECTION 802.22 OF THE STANDARD SPECIFICATIONS. MOVEMENT OF THE FINISHING MACHINE ACROSS NEW CONCRETE SHALL BE ON PLANKS PLACED ON THE SURFACE AND SHALL BE PROHIBITED FOR 72 HOURS AFTER FINISHING THE POUR.

FOR DETAILS OF BRIDGE RAILING, SEE DRAWING NO. 14992A.

SPECIFICATIONS: ARKANSAS STATE HIGHWAY COMMISSION STANDARD SPECIFICATIONS FOR HIGHWAY CONSTRUCTION, EDITION OF 1972, AND APPLICABLE SPECIAL PROVISIONS.

ALL WELDING THAT IS TO BE DONE DURING FABRICATION OF STRUCTURAL STEEL, INCLUDING TEMPORARY WELDS, SHALL BE DETAILED ON THE SHOP DRAWINGS AND SUBMITTED FOR APPROVAL. IF THE CONTRACTOR OR ERECTOR SHOULD WANT TO MAKE ADDITIONAL WELDS, WHETHER TEMPORARY OR PERMANENT, HE SHALL SUBMIT DETAILED DRAWINGS WITH A FORMAL REQUEST TO THE BRIDGE DESIGN DIVISION OF THE ARKANSAS STATE HIGHWAY DEPARTMENT FOR APPROVAL.

ASTM A27, GRADE 70-40 STEEL SHOD CASTINGS SHALL BE PAID FOR AT THE UNIT PRICE PER POUND BID FOR STRUCTURAL STEEL IN PLATE GIRDER SPANS A36".